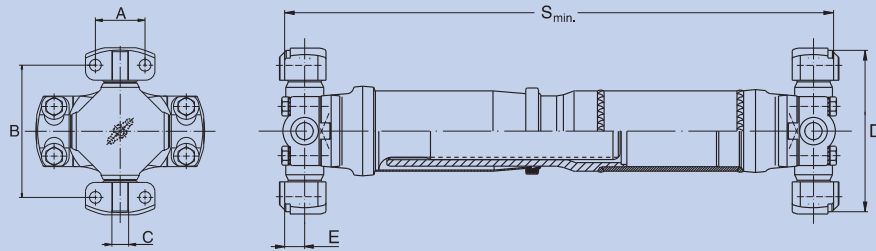
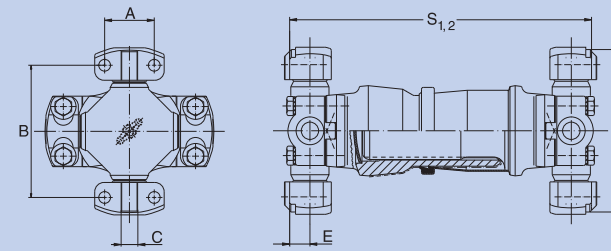


with extension, Roller bearing



Built 110, Tubular Type, larger extension
end number: 0.9XX.110



Built 130, Short Type
end number: 0.9XX.130

Additional length and types on request.

Wing-Style, Tubular Type, larger extension, Roller bearing version

Order number		0.950.110	0.960.110	0.970.110	0.980.110	0.985.110	0.990.110
Series		5C	6C	7C	8C	8.5C	9C
Md _{max}	Nm	2500	4000	5400	7600	9000	13200
Angle of deflection β	°	25	25	25	30	25	25
S _{min}	mm	400	402	465	555	575	575
S ₁	mm	–	–	–	–	–	–
S ₂	mm	–	–	–	–	–	–
X	mm	105	105	110	110	110	110
X ₁	mm	–	–	–	–	–	–
X ₂	mm	–	–	–	–	–	–
P ₁	mm	60 x 4	70 x 4	80 x 4	90 x 4	100 x 5	110 x 6
Spline dim. DIN 5480	mm	42 x 2,0 x 20	50 x 2,0 x 24	55 x 2,5 x 20	60 x 2,5 x 22	65 x 2,5 x 24	75 x 2,5 x 28
A _{±0,2}	mm	42,9	42,9	49,2	49,2	71,4	71,4
B _{±0,2}	mm	88,9	114,3	117,5	174,7	123,9	168,3
C _{±0,8}	mm	14,26	14,26	15,85	15,85	15,85	15,85
D _{-0,4}	mm	115,06	140,46	148,39	206,32	165,08	209,52
E (Subtraction measure)	mm	17,5	17,5	20,6	20,6	25,4	25,4

Md_{max} = Maximum permitted torque. See technical annex
 β = Maximum angle of deflection
 S_{min} = Minimum length of tubular types
 S₁ = Compressed lengths
 S₂ = of short types
 X₁ = Extension at S_{min} resp. S₁
 X₂ = Extension at S₂
 P₁ = Tube diameter. Dimensions in bold type for normal applications.
 Alternative dimensions are for long shafts at high speeds, see technical annex domain speed

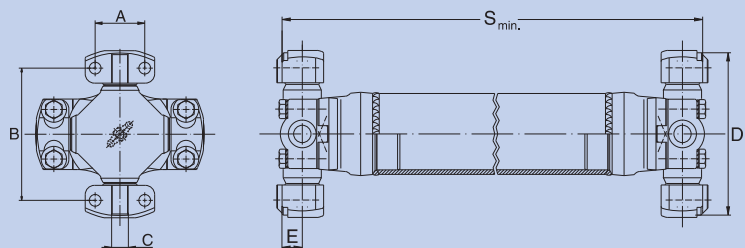
Additional length and types on request.

Wing-Style, Short Type, Roller bearing version

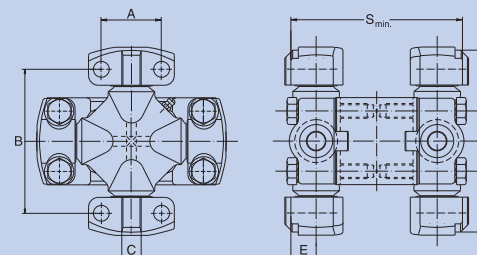
Order number		–	0.960.130	0.970.130	0.980.130	0.985.130	0.990.130
Series		–	6C	7C	8C	8.5C	9C
Md _{max}	Nm	–	4000	5400	7600	9000	13200
Angle of deflection β	°	–	25	25	30	25	25
S _{min}	mm	–	–	–	–	–	–
S ₁	mm	–	260	292	315	330	370
S ₂	mm	–	–	–	–	–	–
X	mm	–	–	–	–	–	–
X ₁	mm	–	45	50	45	45	45
X ₂	mm	–	–	–	–	–	–
P ₁	mm	–	–	–	–	–	–
Spline dim. DIN 5480	mm	–	50 x 2,0 x 24	55 x 2,5 x 20	60 x 2,5 x 22	65 x 2,5 x 24	75 x 2,5 x 28
A _{±0,2}	mm	–	42,9	49,2	49,2	71,4	71,4
B _{±0,2}	mm	–	114,3	117,5	174,7	123,9	168,3
C _{±0,8}	mm	–	14,26	15,85	15,85	15,85	15,85
D _{-0,4}	mm	–	140,46	148,39	206,32	165,08	209,52
E (Subtraction measure)	mm	–	17,5	20,6	20,6	25,4	25,4

Md_{max} = Maximum permitted torque. See technical annex
 β = Maximum angle of deflection
 S_{min} = Minimum length of tubular types
 S₁ = Compressed lengths
 S₂ = of short types
 X₁ = Extension at S_{min} resp. S₁
 X₂ = Extension at S₂
 P₁ = Tube diameter. Dimensions in bold type for normal applications.
 Alternative dimensions are for long shafts at high speeds, see technical annex domain speed

without extension, Roller bearing



Built 200, Tubular Type
end number: 0.9XX.200



Built 300 Universal Joint double
end number: 0.9XX.300

Additional length and types on request.

Wing-Style, Tubular Type, Roller bearing version

Order number		0.950.200	0.960.200	0.970.200	0.980.200	0.985.200	0.990.200
Series		5C	6C	7C	8C	8.5C	9C
Md _{max}	Nm	2500	4000	5400	7600	9000	13200
Angle of deflection β	°	25	25	25	30	25	25
S _{min}	mm	205	206	245	275	315	295
S ₁	mm	–	–	–	–	–	–
S ₂	mm	–	–	–	–	–	–
X	mm	–	–	–	–	–	–
X ₁	mm	–	–	–	–	–	–
X ₂	mm	–	–	–	–	–	–
P ₁	mm	60 x 4	70 x 4	80 x 4	90 x 4	100 x 5	110 x 6
Spline dim. DIN 5480	mm	–	–	–	–	–	–
A _{±0.2}	mm	42,9	42,9	49,2	49,2	71,4	71,4
B _{±0.2}	mm	88,9	114,3	117,5	174,7	123,9	168,3
C ₁₈	mm	14,26	14,26	15,85	15,85	15,85	15,85
D _{-0.4}	mm	115,06	140,46	148,39	206,32	165,08	209,52
E (Subtraction measure)	mm	17,5	17,5	20,6	20,6	25,4	25,4

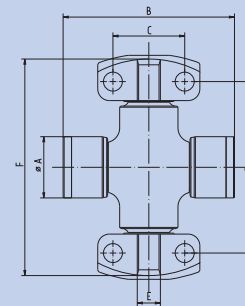
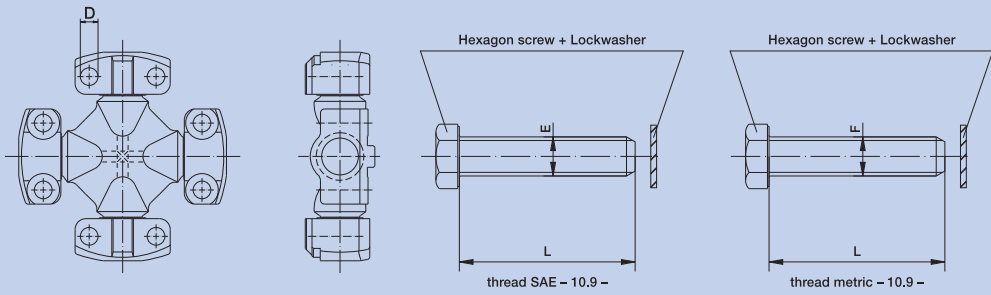
Md_{max} = Maximum permitted torque. See technical annex
 β = Maximum angle of deflection
 S_{min} = Minimum length of tubular types
 S₁ = Compressed lengths
 S₂ = of short types
 X₁ = Extension at S_{min} resp. S₁
 X₂ = Extension at S₂
 P₁ = Tube diameter. Dimensions in bold type for normal applications.
 Alternative dimensions are for long shafts at high speeds, see technical annex domain speed

Additional length and types on request.

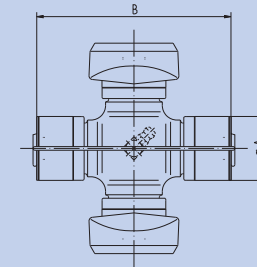
Wing-Style, Universal Joint Double, Roller bearing version

Order number		0.950.300	0.960.300	0.970.300	–	0.985.300	–
Series		5C	6C	7C	–	8.5C	–
Md _{max}	Nm	2500	4000	5400	–	9000	–
Angle of deflection β	°	10	25	10	–	10	–
S _{min}	mm	141	188	140	–	169	–
S ₁	mm	–	–	–	–	–	–
S ₂	mm	–	–	–	–	–	–
X	mm	–	–	–	–	–	–
X ₁	mm	–	–	–	–	–	–
X ₂	mm	–	–	–	–	–	–
P ₁	mm	–	–	–	–	–	–
Spline dim. DIN 5480	mm	–	–	–	–	–	–
A _{±0.2}	mm	42,9	42,9	49,2	–	71,4	–
B _{±0.2}	mm	88,9	114,3	117,5	–	123,9	–
C ₁₈	mm	14,26	14,26	15,85	–	15,85	–
D _{-0.4}	mm	115,06	140,46	148,39	–	165,08	–
E (Subtraction measure)	mm	17,5	17,5	20,6	–	25,4	–

Md_{max} = Maximum permitted torque. See technical annex
 β = Maximum angle of deflection
 S_{min} = Minimum length of tubular types
 S₁ = Compressed lengths
 S₂ = of short types
 X₁ = Extension at S_{min} resp. S₁
 X₂ = Extension at S₂
 P₁ = Tube diameter. Dimensions in bold type for normal applications.
 Alternative dimensions are for long shafts at high speeds, see technical annex domain speed



Combination cross kits



Cross kits for Half Round Yokes

Cross Units, Roller bearing version

Order number	0.950.023	0.960.023	0.970.023	0.980.023	0.985.023	0.990.023
Series	5C	6C	7C	8C	8.5C	9C
bore dimension Ø D	mm 10,2 ^{+0,4}	mm 10,2 ^{+0,4}	mm 13,0 ^{+0,4}	mm 13,0 ^{+0,4}	mm 13,0 ^{+0,4}	mm 13,0 ^{+0,4}

Screw kit SAE – 10.9 –

Order number	0.950.192.001	0.970.192.001	0.985.192.001
thread Ø E x L	inch 3/8"-24-UNF x 1 3/4"	inch 1/2"-20-UNF x 2"	inch 1/2"-20-UNF x 63,5
Screw torque	Nm 62,4	Nm 135,7	Nm 135,7
used for	0.950.023/0.960.023	0.970.023/0.980.023	0.985.023/0.990.023

Screw kit metric – 10.9 –

Order number	0.950.192.002	0.970.192.002	0.985.192.002
thread Ø F x L	mm M10 x 1,25 x 45	mm M12 x 1,5 x 52	mm M12 x 1,5 x 60
Screw torque	Nm 70,4	Nm 120,7	Nm 120,7
used for	0.950.023/0.960.023	0.970.023/0.980.023	0.985.023/0.990.023

Combination cross kits, Roller bearing version

Order number	0.950.023.015	0.950.023.011/012	0.960.023.016	0.960.023.019	0.960.023.017	0.970.023.012
Grease nipple	no	no	no	yes	no	no
Ø A	mm 35	mm 38	mm 38	mm 38	mm 48	mm 42
B	mm 97	mm 106	mm 106	mm 106	mm 126	mm 117,5
C	mm 42,9	mm 42,9	mm 42,9	mm 42,9	mm 42,9	mm 49,2
D	mm 88,9	mm 88,9	mm 114,3	mm 114,3	mm 114,3	mm 117,5
E	mm 14,26	mm 14,26	mm 14,26	mm 14,26	mm 14,26	mm 15,85
F	mm 115,06	mm 115,06	mm 140,46	mm 140,46	mm 140,46	mm 148,39
used for	5C/112	5C/113	6C/113	6C/113	6C/158	7C/148

Cross kits for Half Round Yokes, Roller bearing

Order number	0.100.015.011	0.112.015.013
Ø A	mm 34,915 ^{+0,015}	mm 34,915 ^{+0,015}
B	mm 126,1	mm 106,26 ^{+0,1}
used for / description	0.100.259.011/inter mediate shaft	0.100.300.220/Universal Joint double