

The KANYA Tube Clamp System for All-Round Solutions to Problems

With this catalogue, we are adding some new aspects to our range of tube clamps. High demand from innovative designers for simple and attractive tube clamp joints at reasonable prices has encouraged us to adapt our range to the new market requirements. Major advances have been made, particularly in the field of adjustable clamps. As usual with the KANYA range, this product is also structured as a modular kit. Because they are so easy to adapt, system construction units guarantee optimal solutions to problems.

No matter how the tubes are joined together, KANYA always provides the right clamp. Right-angled or parallel, large tube diameter or small, fixed application or adjustable: the RVS Tube Clamp System will do the job! And don't forget – all the clamps can be combined with one another. This means that you lose nothing – absolutely nothing.

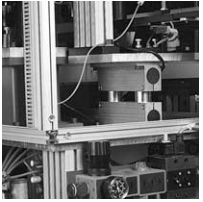


Our current range is shown in this catalogue, which has been re-arranged and illustrated with reference material and examples. This will quickly help you to find exactly what you need to solve your particular problem. However, if the item you want does not happen to be available, we will manufacture a clamp exactly according to your requirements. We are only satisfied if you are satisfied!

Yours sincerely,

KANYA AG

Summary of Contents



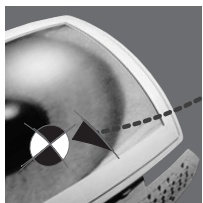
Application Examples

Pages 4 – 7



Clamp Joints without Flange

Pages 11 – 19



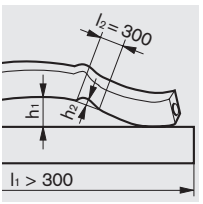
KANYATHEK®

Page 8



Clamp Joints with Flange

Pages 20 – 22



Technical Data

Page 10



Swivel Clamps

Pages 23 – 25



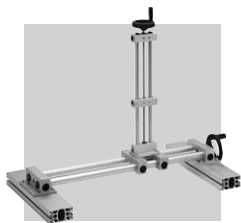
**Basic Components
for Adjustable Units**

Pages 26 – 29



Aluminium Extrusions

Pages 34 – 35



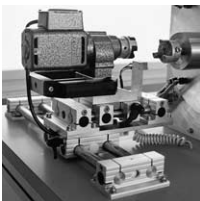
Adjustable Units

Pages 30 – 31



Aluminium Tubes

Page 36



Applications

Pages 32 – 33



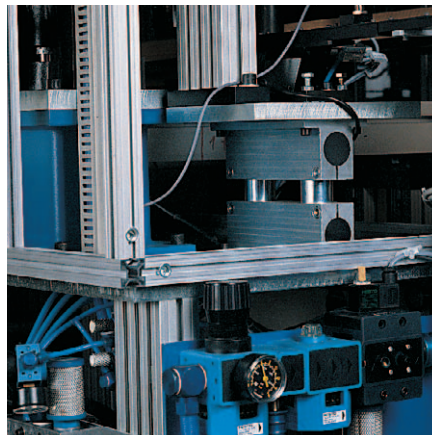
Accessories

Pages 37 – 42

The KANYA modular construction kit system really offers an unlimited range of applications for very special design and construction problems.

Examples from the Field of Apparatus and Machine Construction.

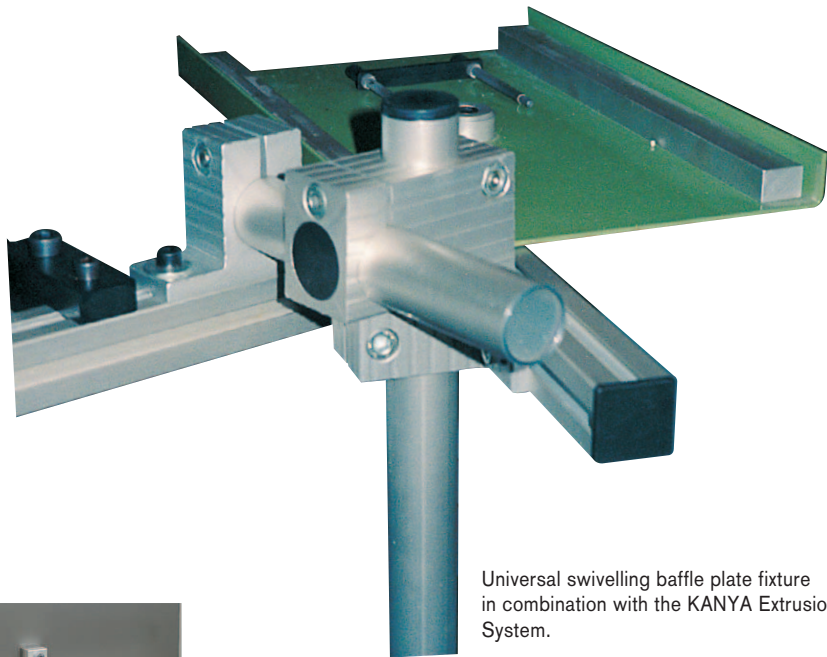
The KANYA Tube Clamp System provides creative and versatile solutions in response to a huge variety of requirements in the field of machine and apparatus construction. Perfect function combined with outstanding appearance. Innovation knows no bounds!



Handling equipment carrier with simple adjustment.



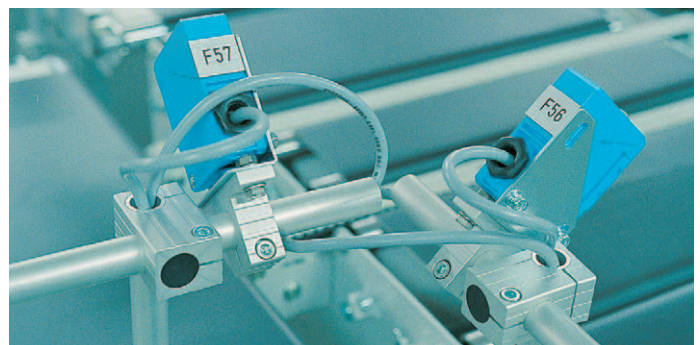
Spray fixture in a powder coating unit. The low weight of the fixture keeps the acceleration and deceleration forces down. The joints have good electrical conductivity properties.



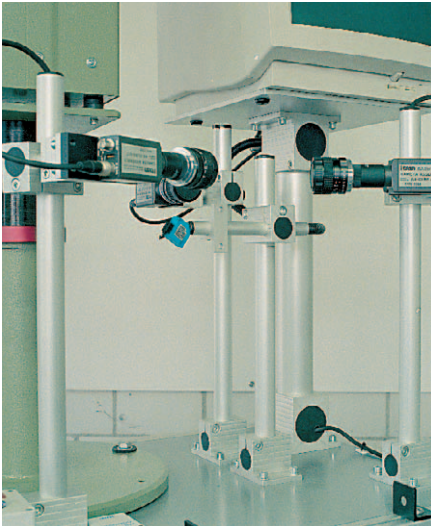
Universal swivelling baffle plate fixture in combination with the KANYA Extrusion Joint System.



Push-pull device on an equipment and storage trolley for telephone installation work.



An easily adjustable photocell fixture.



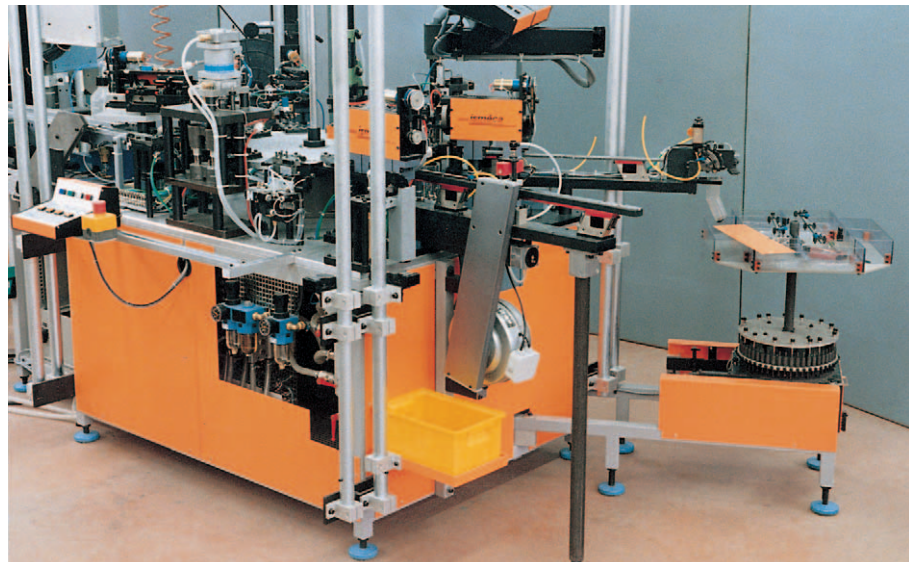
Device to hold optical test equipment



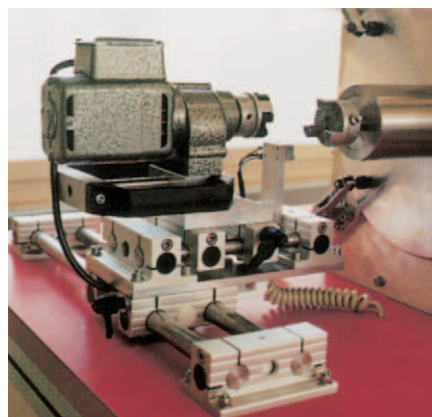
Swing arm with cable reel fixture for automatic insulating unit.



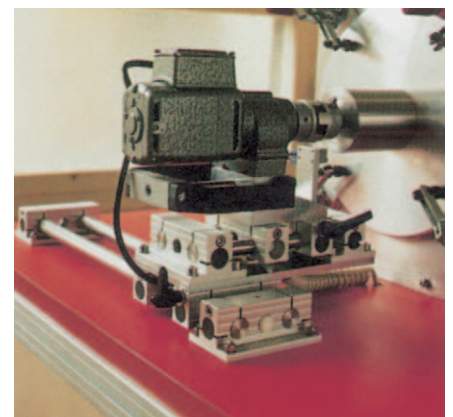
Continuously adjustable fixture for the ink jet heads on a coder.



Protective covering guide device on automatic assembly unit, with weight compensation in the aluminium tubes.



Couplable / decouplable drive on an X/Y adjustable unit for a micro-coating drum. The electric motor is in the decoupled position.

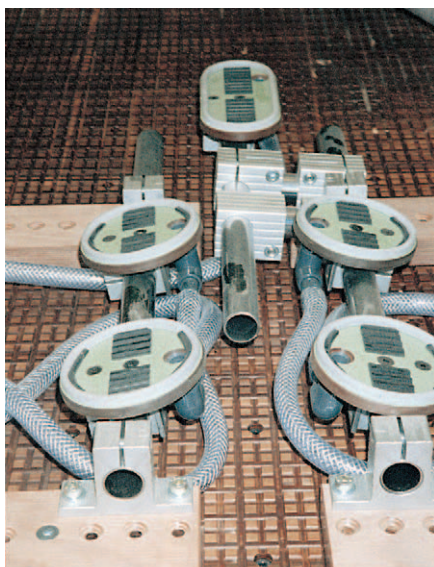


The electric motor in the coupled position.

Process engineering calls for universal simplicity and speed when equipment has to be rearranged. What could be more suitable than a well thought-out Tube Clamp System?

Examples of Laboratory and Process Engineering Uses.

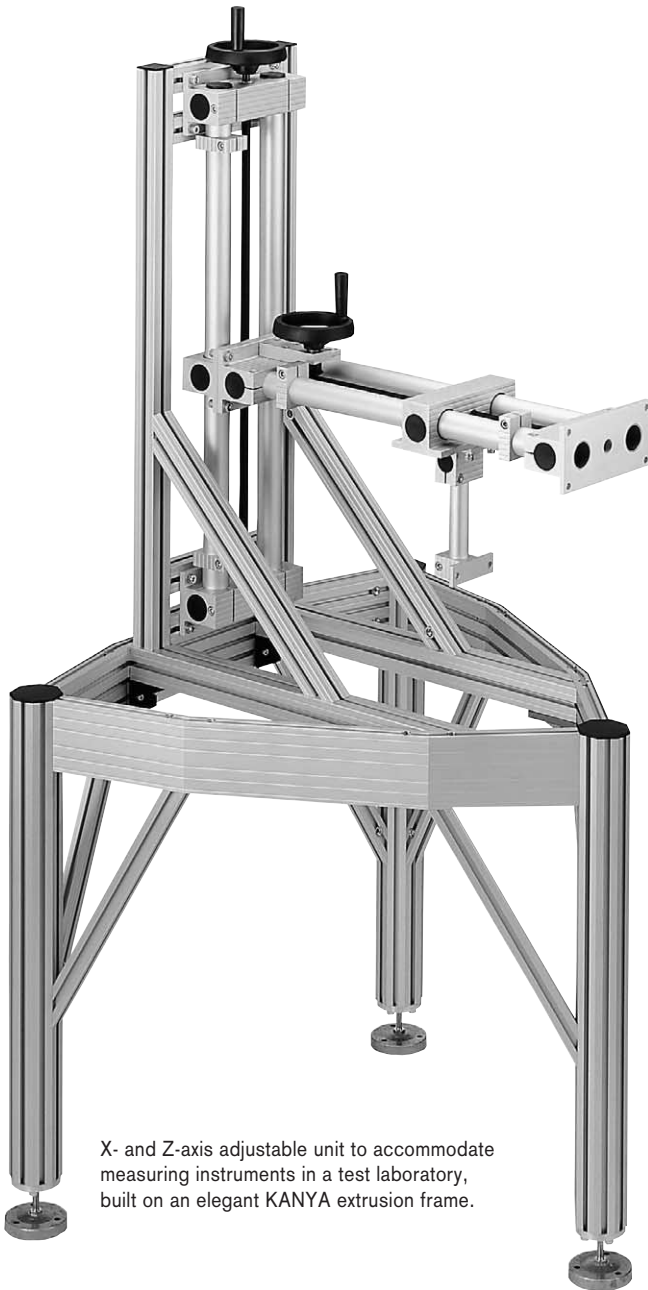
Slacken off the clamp screws, move the joint and secure it in the new position: the arrangement you want is set in place. But the Tube Clamp System's light and elegant appearance also makes it excellent for use in permanently fixed structures. Optimal stability is guaranteed thanks to the precision-made clamp joints, which are manufactured on CNC machines. KANYA will also manufacture special parts on request, and is always ready to help by providing professional advice.



Adjustable vacuum plate to process a variety of chair backs.



Bubble column reactor for liquid / gas phase reactions, with a tempering sheath and gas absorption device.



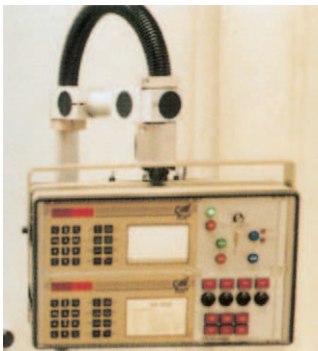
X- and Z-axis adjustable unit to accommodate measuring instruments in a test laboratory, built on an elegant KANYA extrusion frame.



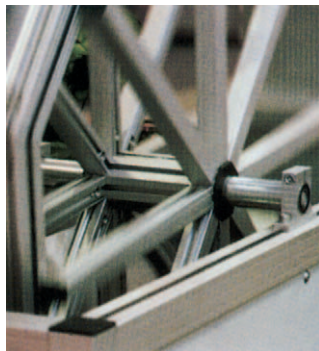
Labelling machine with swing arm for gluing.



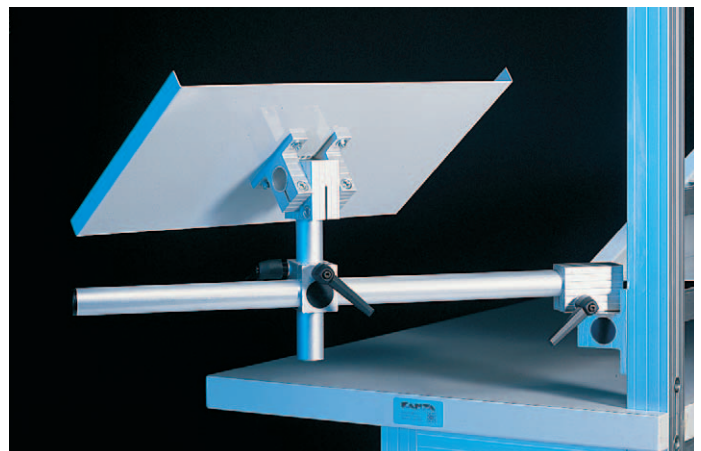
Test equipment with tube structures in a medical laboratory.



Adjustable fixture for control box.



Mounting for a spoked wheel.



Document holder with swing arm, adjustable for height and length.

KANYATHEK®

Use KANYATHEK(r) to view the RVS catalogue on-screen!

All the items from the RVS catalogue are contained in this program as .dwg and .dxf files. The files are available on the CD ROM in the Appendix, or can be downloaded directly from the Internet at www.kanya.com.

The clamp joints are saved as cross-sections; accessories can be viewed as front, side and plan views. The code used for the different files is simply the item number: for accessories, add -1, -2 or -3 depending on the view you require (see the examples opposite).

Another advantage of this electronic catalogue is that it is continuously updated to include innovations. Our Internet website is also continuously updated. Whether you are looking for new clamp joints or accessories to add to your existing equipment, you can benefit from this at any time – www.kanya.com

Cross Clamp

Use
This is the most frequently used clamp. It can hold two freely movable tubes, offset at 90°.

| Nominal Diameter | Dimensions A | A1 | B | C | C1 |
|------------------|--------------|----|----|-----|----|
| 12 | 24 | 8 | 16 | 38 | 9 |
| 20 | 36 | 13 | 30 | 58 | 13 |
| 30 | 52 | 20 | 40 | 84 | 20 |
| 40 | 62 | 25 | 50 | 104 | 25 |
| 50 | 72 | 30 | 60 | 124 | 30 |

For Diameter D tolerances, see page 10

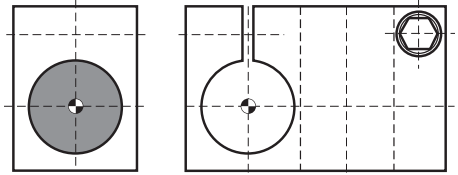
Example:

Cross Clamp R03-05

Data selected:

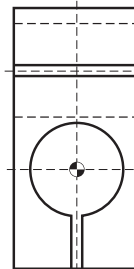
R03-05-1,
R03-05-2 or
R03-05-3

⊕ ≙ insertion point



Vertical projection: -1

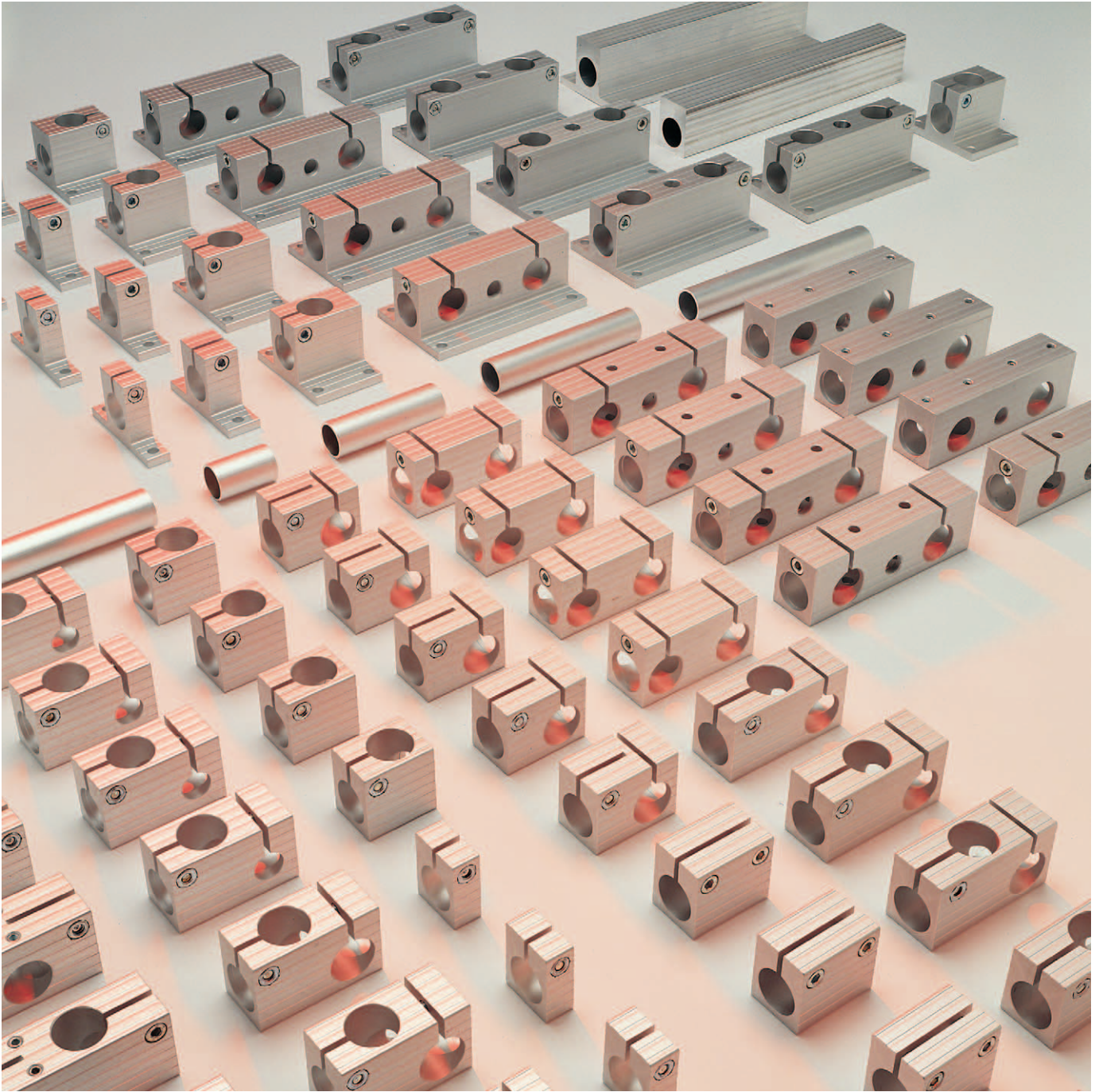
Lateral projection: -2



Horizontal projection: -3

Layer Definition:

- KAN_PROF ≙ Contour line
- KAN_AXIS ≙ Axis line
- KAN_HIDD ≙ Hidden line
- KAN_INPT ≙ Insertion point
- KAN_THIN ≙ Auxiliary (thin) line



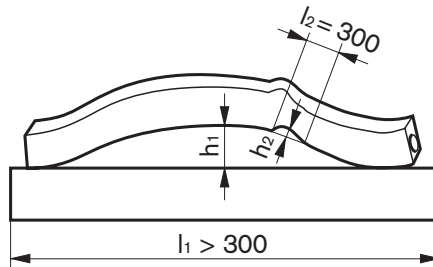
Technical Data for Aluminium Extrusions

| | | |
|---------------------|--|---|
| Alloy | 6063 | |
| Quality | T66 | temper-hardened (F25) |
| DIN designation | DIN EN 755 | |
| Tolerances | EN 12020-2 | |
| Density/weight | δ : 2.7 g/cm ³ | Weight tolerance: $\pm 10\%$ |
| Tensile strength | R _m : min 245 N/mm ² | |
| Yield | R _{p 0.2} : min 200 N/mm ² | |
| Elongation | A ₅ : min 10% | |
| | A ₁₀ : min 8% | |
| Modul of elasticity | E: 70 KN/mm ² | |
| Brinell hardness | HB ~75 | |
| Surface | natural matt anodised. Depth approx. 12 μ | Colour anodised or powder coated in accordance with the RAL table, on request |
| Thermal expansion | 0.0232 mm/m/° Δ t | |

Extrusion tolerances – extract from EN 12020-02

1. Straightness tolerances

Cavity extrusions shall not exceed the values stated in the table for straightness tolerances h_1 . The deviation h_2 shall not exceed a maximum of 0.3 mm over any length of $l_2 = 300$ mm.

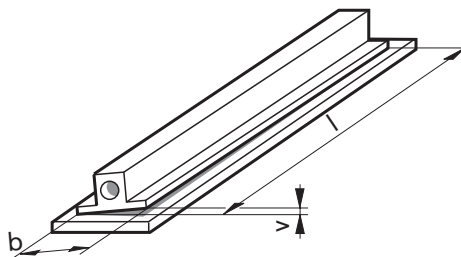


| | | | |
|--------------------------------|---------|---------|---------|
| Length l ₁ in m | up to 1 | up to 2 | up to 3 |
| Tolerance h ₁ in mm | 0.7 | 1.3 | 1.8 |

2. Distortion Tolerance v

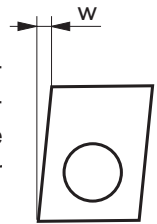
The distortion tolerance v for cavity extrusions subject to length is shown in the table.

| Width b in mm Measurement Range | | Flatness Tolerance v in mm for lengths in mm | | |
|------------------------------------|-------|---|-------------------------|-------------------------|
| over | up to | – up to 1000 | over 1000 up to 2000 | over 2000 up to 3000 |
| – | 25 | 1.0 | 1.5 | 1.5 |
| 25 | 50 | 1.0 | 1.2 | 1.5 |
| 50 | 75 | 1.0 | 1.2 | 1.2 |
| 75 | 100 | 1.0 | 1.2 | 1.5 |
| 100 | 125 | 1.0 | 1.5 | 1.8 |



3. Angular Tolerance w

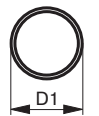
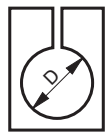
If side lengths are unequal, the angular tolerance relates to the angle of the shorter side.



| Width b in mm | | Inclination tolerance w in mm |
|---------------|-------|----------------------------------|
| over | up to | |
| – | 30 | 0.3 |
| 30 | 50 | 0.4 |
| 50 | 80 | 0.5 |
| 80 | 100 | 0.6 |
| 100 | 120 | 0.7 |

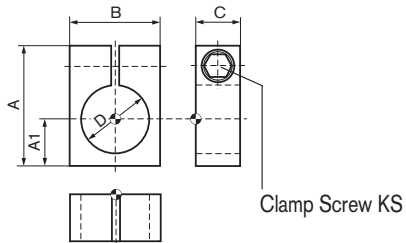
4. Diameter Tolerances D/D1

The tolerances shown in the Table below relate to the Diameter D/D1 in each case, as shown in the technical drawings.



| Diameter D/D1 in mm | D Tolerance in mm | D1 |
|---------------------|-------------------|-----------|
| 12 | 0 / +0.05 | 0 / -0.1 |
| 15 | 0 / +0.05 | 0 / -0.1 |
| 20 | 0 / +0.1 | 0 / -0.15 |
| 30 | 0 / +0.1 | 0 / -0.2 |
| 40 | 0 / +0.1 | 0 / -0.2 |
| 50 | 0 / +0.1 | 0 / -0.2 |

Clamp Ring



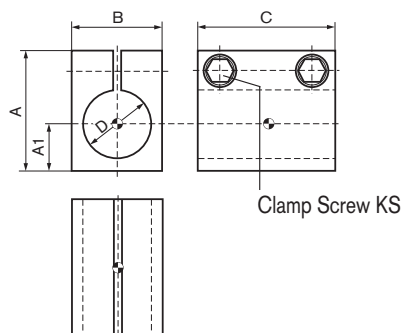
Use

Normally used as a stop, or as a holder for limit switches or similar.

| Nominal Diameter | Dimensions | | B | C | D | KS | Weight in kg | Order Number |
|------------------|------------|----|----|----|----|----|--------------|--------------|
| | A | A1 | | | | | | |
| 12 | 24 | 8 | 16 | 15 | 12 | M4 | - | on request |
| 20 | 36 | 13 | 30 | 20 | 20 | M6 | 0.045 | R02-15 |
| 30 | 52 | 20 | 40 | 20 | 30 | M8 | 0.080 | R03-15 |
| 40 | 62 | 25 | 50 | 20 | 40 | M8 | 0.105 | R04-15 |
| 50 | 72 | 30 | 60 | 20 | 50 | M8 | 0.135 | R05-15 |

For Diameter D tolerances, see page 10

Joining Clamp



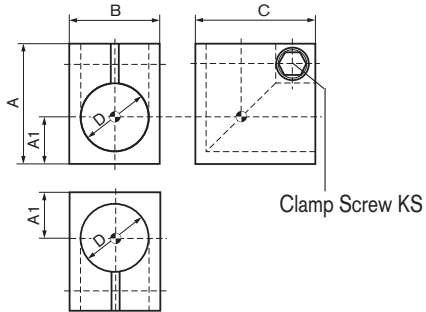
Use

To extend tubes and as a stop for large forces.

| Nominal Diameter | Dimensions | | B | C | D | KS | Weight in kg | Order number |
|------------------|------------|----|----|-----|----|----|--------------|--------------|
| | A | A1 | | | | | | |
| 12 | 24 | 8 | 16 | 32 | 12 | M4 | – | on request |
| 20 | 36 | 13 | 30 | 40 | 20 | M6 | 0.085 | R02-01 |
| 30 | 52 | 20 | 40 | 60 | 30 | M8 | 0.225 | R03-01 |
| 40 | 62 | 25 | 50 | 80 | 40 | M8 | 0.395 | R04-01 |
| 50 | 72 | 30 | 60 | 100 | 50 | M8 | 0.625 | R05-01 |

For Diameter D tolerances, see page 10

Angle Clamp



Use

Attractive corner joint for normal loads.

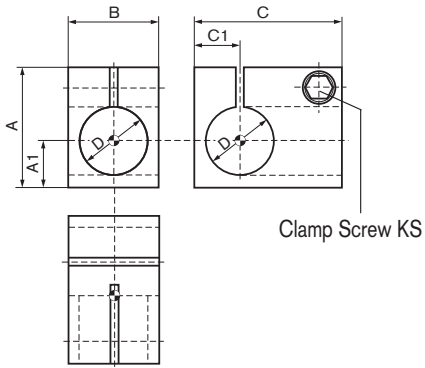
For reasons of stability, it is recommended that tubes in angle clamp joints are cut at 45°.



| Nominal Diameter | Dimensions | | B | C | D | KS | Weight in kg | Order number |
|------------------|------------|----|----|----|----|----|--------------|--------------|
| | A | A1 | | | | | | |
| 12 | 24 | 8 | 16 | 24 | 12 | M4 | - | on request |
| 20 | 36 | 13 | 30 | 36 | 20 | M6 | 0.060 | R02-02 |
| 30 | 52 | 20 | 40 | 52 | 30 | M8 | 0.150 | R03-02 |
| 40 | 62 | 25 | 50 | 62 | 40 | M8 | 0.225 | R04-02 |
| 50 | 72 | 30 | 60 | 72 | 50 | M8 | 0.320 | R05-02 |

For Diameter D tolerances, see page 10

T Clamp



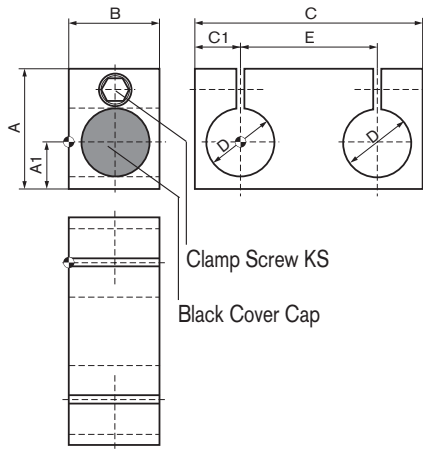
Use

Cross joints where only one tube needs to be movable.

| Nominal Diameter | Dimensions | | B | C | C1 | D | KS | Weight in kg | Order Number |
|------------------|------------|----|----|-----|----|----|----|--------------|--------------|
| | A | A1 | | | | | | | |
| 12 | 24 | 8 | 16 | 30 | 9 | 12 | M4 | - | on request |
| 20 | 36 | 13 | 30 | 45 | 13 | 20 | M6 | 0.080 | R02-03 |
| 30 | 52 | 20 | 40 | 65 | 20 | 30 | M8 | 0.215 | R03-03 |
| 40 | 62 | 25 | 50 | 85 | 25 | 40 | M8 | 0.365 | R04-03 |
| 50 | 72 | 30 | 60 | 105 | 30 | 50 | M8 | 0.560 | R05-03 |

For Diameter D tolerances, see page 10

Parallel Clamp



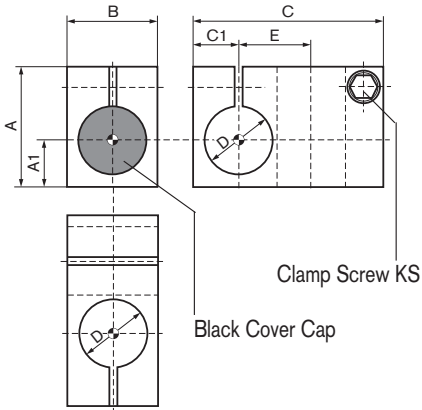
Use

To strengthen structures (by doubling) or to extend tubes on different levels.

| Nominal Diameter | Dimensions | | B | C | C1 | D | E | KS | Weight in kg | Order Number |
|------------------|------------|----|----|-----|----|----|-----|----|--------------|--------------|
| | A | A1 | | | | | | | | |
| 12 | 24 | 8 | 16 | 42 | 9 | 12 | 24 | M4 | - | on request |
| 20 | 36 | 13 | 30 | 66 | 13 | 20 | 40 | M6 | 0.110 | R02-04 |
| 30 | 52 | 20 | 40 | 100 | 20 | 30 | 60 | M8 | 0.310 | R03-04 |
| 40 | 62 | 25 | 50 | 130 | 25 | 40 | 80 | M8 | 0.535 | R04-04 |
| 50 | 72 | 30 | 60 | 160 | 30 | 50 | 100 | M8 | 0.815 | R05-04 |

For Diameter D tolerances, see page 10

Cross Clamp



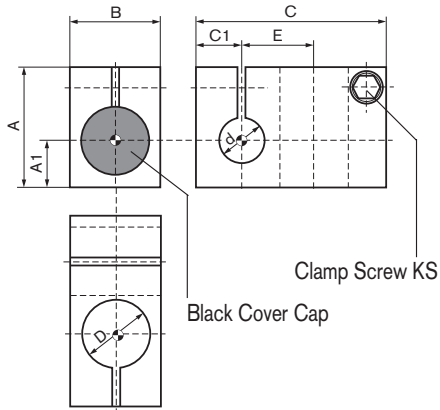
Use

This is the most frequently used clamp. It can hold two freely movable tubes, offset at 90°.

| Nominal Diameter | Dimensions | | B | C | C1 | D | E | KS | Weight in kg | Order Number |
|------------------|------------|----|----|-----|----|----|----|----|--------------|--------------|
| | A | A1 | | | | | | | | |
| 12 | 24 | 8 | 16 | 38 | 9 | 12 | 13 | M4 | 0.022 | R01-05 |
| 20 | 36 | 13 | 30 | 58 | 13 | 20 | 22 | M6 | 0.095 | R02-05 |
| 30 | 52 | 20 | 40 | 84 | 20 | 30 | 32 | M8 | 0.235 | R03-05 |
| 40 | 62 | 25 | 50 | 104 | 25 | 40 | 42 | M8 | 0.370 | R04-05 |
| 50 | 72 | 30 | 60 | 124 | 30 | 50 | 52 | M8 | 0.535 | R05-05 |

For Diameter D tolerances, see page 10

Clamp Joints without Flange



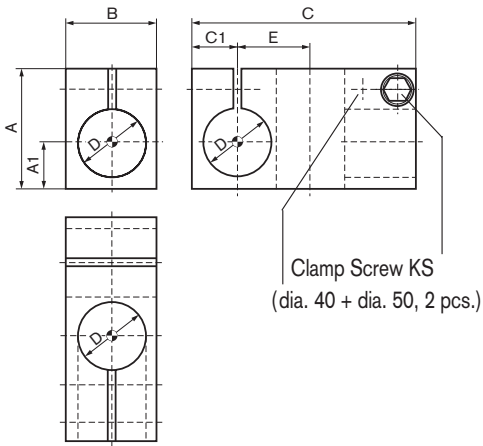
Use

Similar to the cross clamp, but with a smaller tube on the second level.

| Nominal Diameter | Dimensions | | B | C | C1 | D | d | E | KS | Weight in kg | Order Number |
|------------------|------------|----|----|-----|----|----|----|----|----|--------------|--------------|
| | A | A1 | | | | | | | | | |
| 20 / 12 | 36 | 13 | 30 | 58 | 13 | 20 | 12 | 22 | M6 | 0.102 | R02-07.12 |
| 30 / 12 | 52 | 20 | 40 | 84 | 20 | 30 | 12 | 32 | M6 | - | on request |
| 30 / 20 | 52 | 20 | 40 | 84 | 20 | 30 | 20 | 32 | M6 | 0.255 | R03-07.20 |
| 40 / 20 | 62 | 25 | 50 | 104 | 25 | 40 | 20 | 42 | M8 | 0.420 | R04-07.20 |
| 40 / 30 | 62 | 25 | 50 | 104 | 25 | 40 | 30 | 42 | M8 | 0.400 | R04-07.30 |
| 50 / 40 | 72 | 30 | 60 | 124 | 30 | 50 | 40 | 52 | M8 | 0.585 | R05-07.40 |

Other combinations on request; for Diameter D tolerances, see page 10

Cross T-Clamp



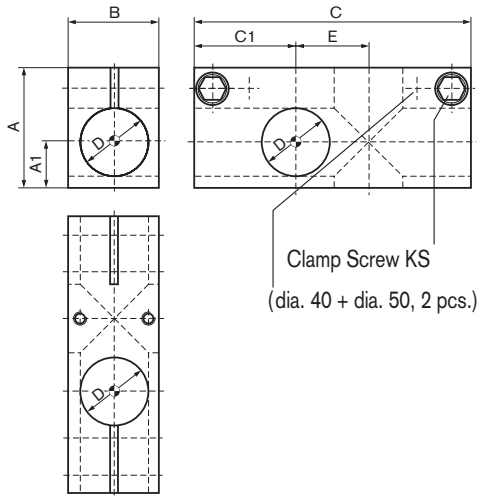
Use

Tubes can exit from this clamp in three directions, but only the same two tubes as in the Cross Clamp (page 16) pass all the way through the joint.

| Nominal Diameter | Dimensions | | B | C | C1 | D | E | KS | Weight in kg | Order Number |
|------------------|------------|----|----|-----|----|----|----|----|--------------|--------------|
| | A | A1 | | | | | | | | |
| 12 | 24 | 8 | 16 | 40 | 9 | 12 | 13 | M4 | - | on request |
| 20 | 36 | 13 | 30 | 65 | 13 | 20 | 22 | M6 | 0.105 | R02-10 |
| 30 | 52 | 20 | 40 | 98 | 20 | 30 | 32 | M8 | 0.285 | R03-10 |
| 40 | 62 | 25 | 50 | 125 | 25 | 40 | 42 | M8 | 0.470 | R04-10 |
| 50 | 72 | 30 | 60 | 155 | 30 | 50 | 52 | M8 | 0.730 | R05-10 |

For Diameter D tolerances, see page 10

Universal Clamp



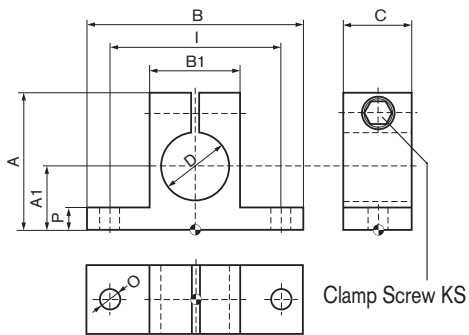
Use

As its name implies, the four tube exits on this joint make it suitable for universal use.

| Nominal Diameter | Dimensions | | B | C | C1 | D | E | KS | Weight in kg | Order Number |
|------------------|------------|----|----|-----|----|----|----|----|--------------|--------------|
| | A | A1 | | | | | | | | |
| 12 | 24 | 8 | 16 | 53 | 20 | 12 | 13 | M4 | - | on request |
| 20 | 36 | 13 | 30 | 82 | 30 | 20 | 22 | M6 | 0.145 | R02-11 |
| 30 | 52 | 20 | 40 | 122 | 45 | 30 | 32 | M8 | 0.375 | R03-11 |
| 40 | 62 | 25 | 50 | 162 | 60 | 40 | 42 | M8 | 0.650 | R04-11 |
| 50 | 72 | 30 | 60 | 202 | 75 | 50 | 52 | M8 | 1.025 | R05-11 |

For Diameter D tolerances, see page 10

Horizontal Clamp



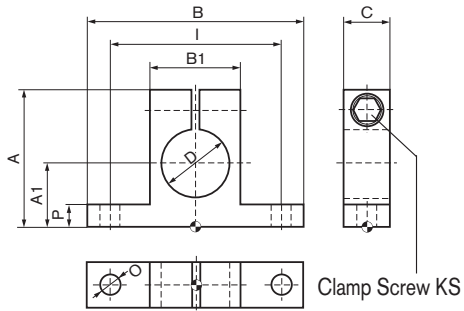
Use

This joint is normally used as a pedestal bearing. However, it can also be used as a holder for screwed-on parts.

| Nominal Diameter | Dimensions | | | | | | | | | | Weight in kg | Order Number |
|------------------|------------|----|-----|----|----|----|-----|---|----|----|--------------|--------------|
| | A | A1 | B | B1 | C | D | I | O | P | KS | | |
| 12 | 28 | 12 | 35 | 16 | 15 | 12 | 25 | 6 | 4 | M4 | 0.015 | R01-60 |
| 15 | 45 | 22 | 65 | 30 | 20 | 15 | 50 | 7 | 8 | M6 | 0.088 | R15-60 |
| 20 | 45 | 22 | 65 | 30 | 20 | 20 | 50 | 7 | 8 | M6 | 0.080 | R02-60 |
| 30 | 60 | 28 | 95 | 40 | 30 | 30 | 75 | 9 | 8 | M8 | 0.170 | R03-60 |
| 40 | 72 | 35 | 95 | 50 | 40 | 40 | 75 | 9 | 10 | M8 | 0.295 | R04-60 |
| 50 | 82 | 40 | 120 | 60 | 50 | 50 | 100 | 9 | 10 | M8 | 0.470 | R05-60 |

For Diameter D tolerances, see page 10

Tube Cleat



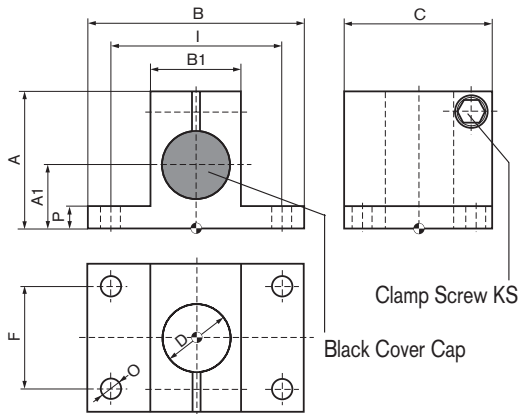
Use

Can be used like the horizontal clamp, but for smaller loads

| Nominal Diameter | Dimensions | | | | | | | | | | Weight in kg | Order Number |
|------------------|-------------|----|-----|----|----|----|-----|---|----|----|--------------|--------------|
| | A | A1 | B | B1 | C | D | I | O | P | KS | | |
| 12 | see page 20 | | | | | | | | | | | |
| 15 | see page 20 | | | | | | | | | | | |
| 20 | see page 20 | | | | | | | | | | | |
| 30 | 60 | 28 | 95 | 40 | 20 | 30 | 75 | 9 | 8 | M8 | 0.115 | R03-65 |
| 40 | 72 | 35 | 95 | 50 | 20 | 40 | 75 | 9 | 10 | M8 | 0.150 | R04-65 |
| 50 | 82 | 40 | 120 | 60 | 20 | 50 | 100 | 9 | 10 | M8 | 0.195 | R05-65 |

For Diameter D tolerances, see page 10

Vertical Clamp



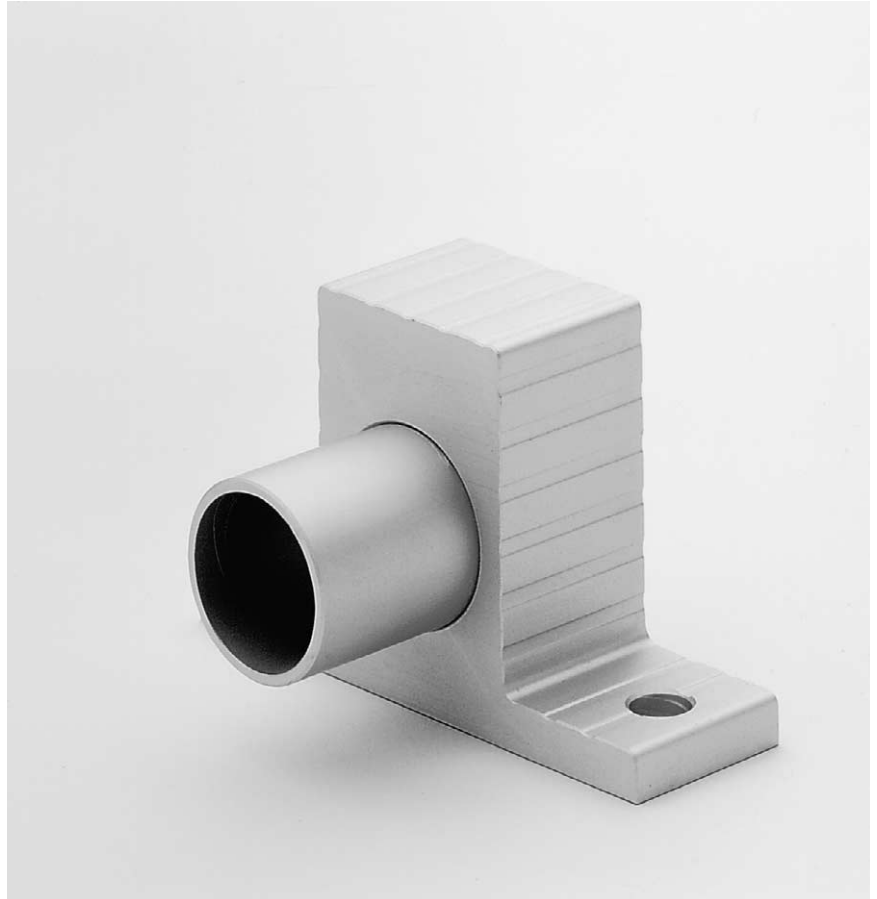
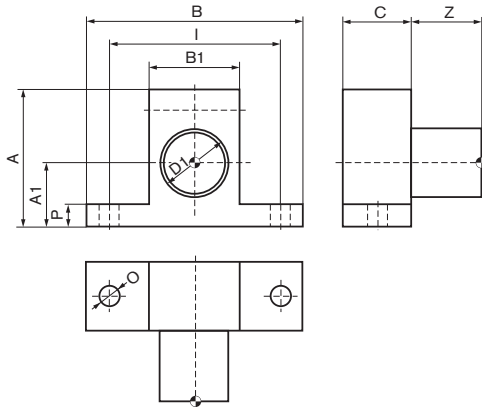
Use

This is the elementary component for a wide variety of constructions, whether as a flange, a build-on joint or a holder.

| Nominal Diameter | Dimensions | | | | | | | | | | Weight | | Order Number |
|------------------|------------|----|-----|----|----|----|----|-----|---|----|--------|-------|--------------|
| | A | A1 | B | B1 | C | D | F | I | O | P | KS | in kg | |
| 12 | 28 | 12 | 35 | 16 | 32 | 12 | - | 25 | 6 | 4 | M4 | 0.029 | R01-50 |
| 20 | 45 | 22 | 65 | 30 | 45 | 20 | 25 | 50 | 7 | 8 | M6 | 0.135 | R02-50 |
| 30 | 60 | 28 | 95 | 40 | 65 | 30 | 50 | 75 | 9 | 8 | M8 | 0.310 | R03-50 |
| 40 | 72 | 35 | 95 | 50 | 75 | 40 | 50 | 75 | 9 | 10 | M8 | 0.440 | R04-50 |
| 50 | 82 | 40 | 120 | 60 | 85 | 50 | 50 | 100 | 9 | 10 | M8 | 0.610 | R05-50 |

For Diameter D tolerances, see page 10

End Swivel Clamp



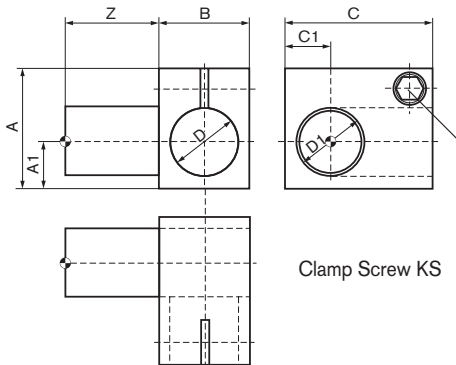
Use

The tube is firmly pressed into this clamp, making it particularly suitable for oblique connections. Can also be used for permanent swivel functions.

| Nominal Diameter | Dimensions | | | | | | | | | | Weight in kg | Order Number |
|------------------|------------|----|-----|----|----|----|-----|---|----|----|--------------|--------------|
| | A | A1 | B | B1 | C | D1 | I | O | P | Z | | |
| 12 | 28 | 12 | 35 | 16 | 15 | 12 | 25 | 6 | 4 | 17 | - | on request |
| 20 | 45 | 22 | 65 | 30 | 20 | 20 | 50 | 7 | 8 | 21 | 0.080 | R02-70 |
| 30 | 60 | 28 | 95 | 40 | 30 | 30 | 75 | 9 | 8 | 31 | 0.190 | R03-70 |
| 40 | 72 | 35 | 95 | 50 | 40 | 40 | 75 | 9 | 10 | 41 | 0.340 | R04-70 |
| 50 | 82 | 40 | 120 | 60 | 50 | 50 | 100 | 9 | 10 | 51 | 0.585 | R05-70 |

For Diameter D tolerances, see page 10

T-Swivel Clamp



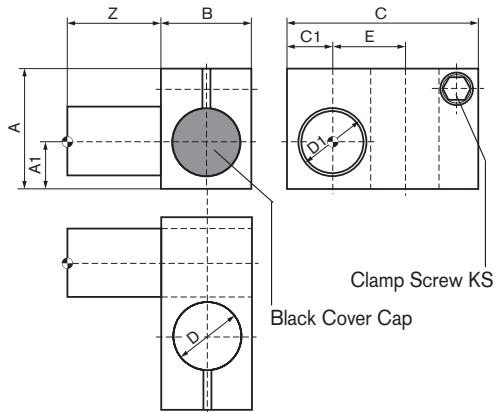
Use

Chiefly used where tubes coming out of the joint must be swivelled in connection with all the other clamp joints.

| Nominal Diameter | Dimensions | | B | C | C1 | D | D1 | Z | KS | Weight in kg | Order Number |
|------------------|------------|----|----|-----|----|----|----|----|----|--------------|--------------|
| | A | A1 | | | | | | | | | |
| 12 | 24 | 8 | 16 | 30 | 9 | 12 | 12 | 17 | M4 | - | on request |
| 20 | 36 | 13 | 30 | 45 | 13 | 20 | 20 | 31 | M6 | 0.100 | R02-13 |
| 30 | 52 | 20 | 40 | 65 | 20 | 30 | 30 | 41 | M8 | 0.255 | R03-13 |
| 40 | 62 | 25 | 50 | 85 | 25 | 40 | 40 | 51 | M8 | 0.435 | R04-13 |
| 50 | 72 | 30 | 60 | 105 | 30 | 50 | 50 | 61 | M8 | 0.700 | R05-13 |

For Diameter D tolerances, see page 10

Cross Swivel Clamp



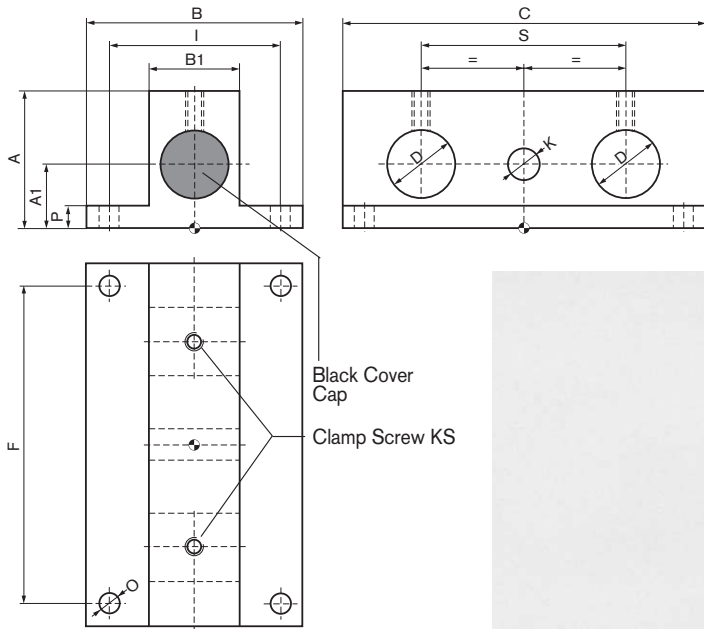
Use

To brace structures with oblique tube connections; also used like the T-swivel clamp.

| Nominal Diameter | Dimensions | | | | | | | | | | Weight in kg | Order Number |
|------------------|------------|----|----|-----|----|----|----|----|----|----|--------------|--------------|
| | A | A1 | B | C | C1 | D | D1 | E | Z | KS | | |
| 12 | 24 | 8 | 16 | 38 | 9 | 12 | 12 | 13 | 17 | M4 | - | on request |
| 20 | 36 | 13 | 30 | 58 | 13 | 20 | 20 | 22 | 21 | M6 | 0.115 | R02-14 |
| 30 | 52 | 20 | 40 | 84 | 20 | 30 | 30 | 32 | 31 | M8 | 0.275 | R03-14 |
| 40 | 62 | 25 | 50 | 104 | 25 | 40 | 40 | 42 | 41 | M8 | 0.440 | R04-14 |
| 50 | 72 | 30 | 60 | 124 | 30 | 50 | 50 | 52 | 51 | M8 | 0.670 | R05-14 |

For Diameter D tolerances, see page 10

Horizontal Support



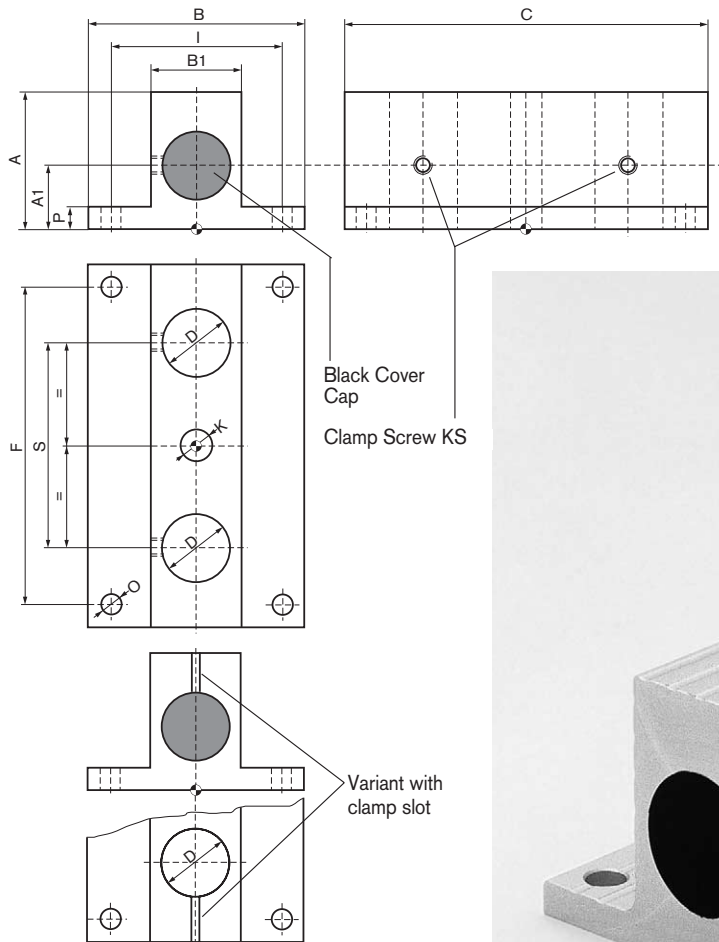
Use

The Horizontal Support is usually needed to close off adjustable units. However, it can also be used independently as a static or dynamic clamp.

| Nominal Diameter | Dimensions | | | | | | | | | | | | Weight | | Order Number |
|------------------|------------|----|----|----|-----|----|-----|----|----|---|----|-----|--------|-------|--------------|
| | A | A1 | B | B1 | C | D | F | I | K | O | P | S | KS | in kg | |
| 20 | 45 | 22 | 65 | 30 | 110 | 20 | 95 | 50 | 10 | 7 | 8 | 60 | M6 | 0.360 | R02-90 |
| 30 | 60 | 28 | 95 | 40 | 160 | 30 | 140 | 75 | 14 | 9 | 8 | 90 | M8 | 0.845 | R03-90 |
| 40 | 72 | 35 | 95 | 50 | 200 | 40 | 180 | 75 | 14 | 9 | 10 | 120 | M8 | 1.390 | R04-90 |

Other combinations on request; for Diameter D tolerances, see page 10

Vertical Support



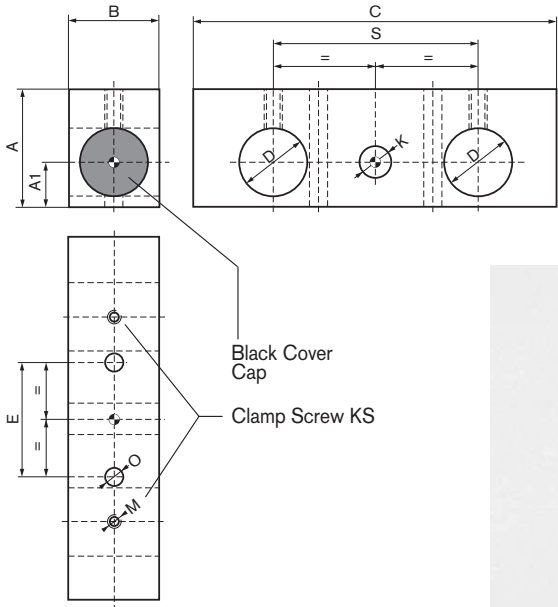
Use

The same uses as the Horizontal Support. It can also be used as a carrier for handling equipment which needs to be rearranged simply and quickly. The Vertical Support can also be obtained with a clamp slot.

| Nominal Diameter | Dimensions | | | | | | | | | | | | Weight KS in kg | Order Number without Clamp Slot | Order Number with Clamp Slot | |
|------------------|------------|----|----|----|-----|----|-----|----|----|---|----|-----|-----------------|---------------------------------|------------------------------|--------|
| | A | A1 | B | B1 | C | D | F | I | K | O | P | S | | | | |
| 20 | 45 | 22 | 65 | 30 | 110 | 20 | 95 | 50 | 10 | 7 | 8 | 60 | M6 | 0.330 | R02-91 | R02-81 |
| 30 | 60 | 28 | 95 | 40 | 160 | 30 | 140 | 75 | 14 | 9 | 8 | 90 | M6 | 0.760 | R03-91 | R03-81 |
| 40 | 72 | 35 | 95 | 50 | 200 | 40 | 180 | 75 | 14 | 9 | 10 | 120 | M6 | 1.225 | R04-91 | R04-81 |

Other combinations on request; for Diameter D tolerances, see page 10

Universal Support



Use

Same use as the Supports shown on pages 26 and 27, but with the advantage that this component can be used as a Horizontal and Vertical Adjustable Unit.

| Nominal Diameter | Dimensions | | B | C | D | E | O | K | S | KS | Weight in kg | Order Number |
|------------------|------------|----|----|-----|----|----|-----|----|-----|----|--------------|--------------|
| | A | A1 | | | | | | | | | | |
| 20 | 36 | 13 | 30 | 110 | 20 | 25 | 6.5 | 10 | 60 | M6 | 0.190 | R02-30 |
| 30 | 52 | 20 | 40 | 160 | 30 | 50 | 8.5 | 14 | 90 | M8 | 0.520 | R03-30 |
| 40 | 62 | 25 | 50 | 200 | 40 | 50 | 8.5 | 14 | 120 | M8 | 0.870 | R04-30 |

Other combinations on request; for Diameter D tolerances, see page 10

Universal Slide

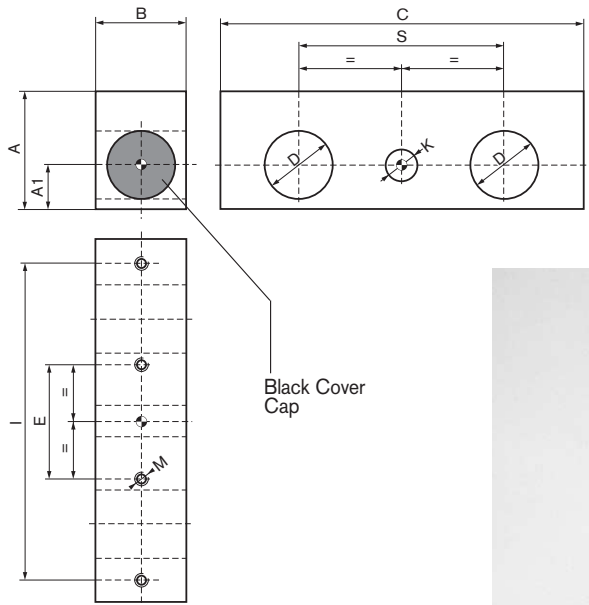


Illustration with clamp and sliding bush



Illustration without clamp

Use

Simple adjustable units can be built in modular form, in combination with the Supports on pages 26, 27 and 28. The four threads are used to fix other structures in place.

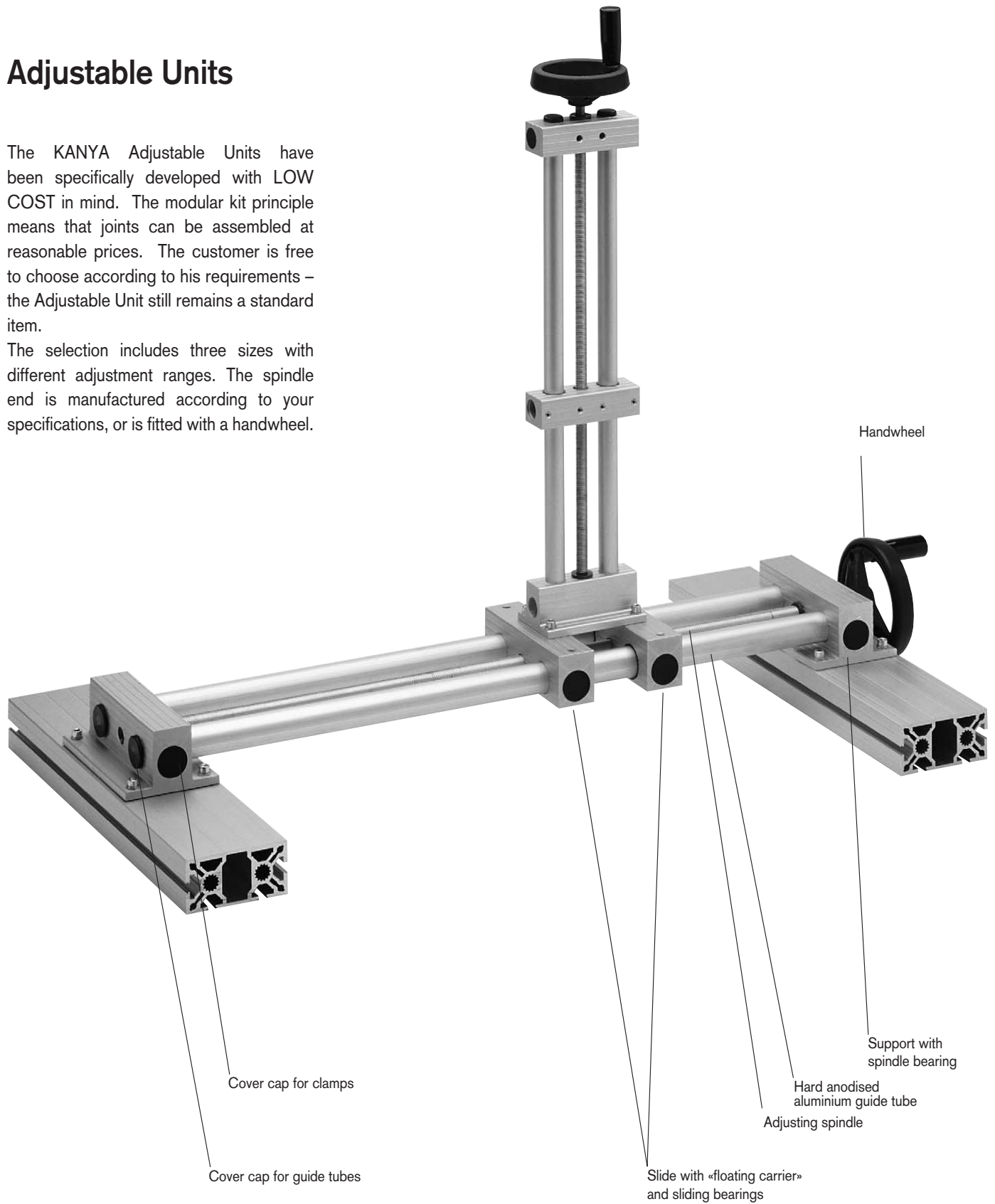
| Nominal Dimensions | | | | Weight in kg | Order Number single-sided clamp | Order Number double-sided clamp | Order Number without clamp | | | | | | | |
|--------------------|----|----|----|-----------------|------------------------------------|------------------------------------|-------------------------------|----|----|-----|-------|---------------|---------------|---------------|
| Diameter | A | A1 | B | | | | | | | | | | | |
| 20 | 36 | 13 | 30 | 110 | 20 | 25 | 95 | M6 | 10 | 60 | 0.200 | R02-31 (-GL)* | R02-32 (-GL)* | R02-41 (-GL)* |
| 30 | 52 | 20 | 40 | 160 | 30 | 50 | 140 | M8 | 14 | 90 | 0.535 | R03-31 (-GL)* | R03-32 (-GL)* | R03-41 (-GL)* |
| 40 | 62 | 25 | 50 | 200 | 40 | 50 | 180 | M8 | 14 | 120 | 0.870 | R04-31 (-GL)* | R04-32 (-GL)* | R04-41 (-GL)* |

* On request, we can supply the slide with sliding bushes: add -GL to the order number

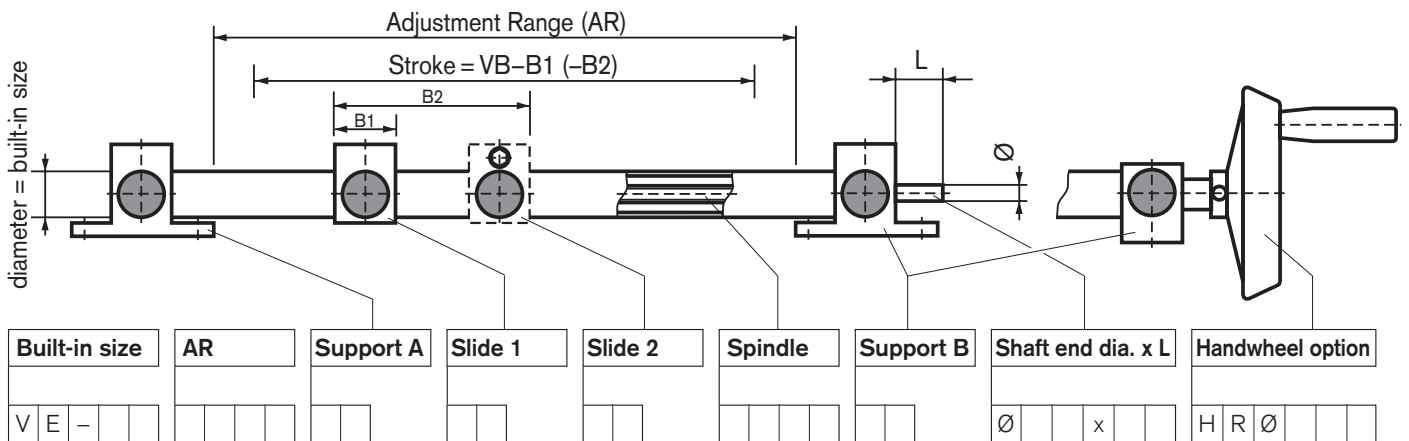
Adjustable Units

The KANYA Adjustable Units have been specifically developed with LOW COST in mind. The modular kit principle means that joints can be assembled at reasonable prices. The customer is free to choose according to his requirements – the Adjustable Unit still remains a standard item.

The selection includes three sizes with different adjustment ranges. The spindle end is manufactured according to your specifications, or is fitted with a handwheel.



Ordering Information



Examples:

| | | | | | | |
|-----------|---------|-----|-----|-----|-------------|-----------------------|
| V E - 2 0 | 1 2 5 0 | 9 0 | 3 1 | - - | M 1 2 9 0 | Ø 1 0 x 2 0 |
| V E - 4 0 | 2 3 0 0 | 9 1 | 3 1 | 4 1 | T R 1 6 3 0 | - - - - - H R Ø 1 6 0 |

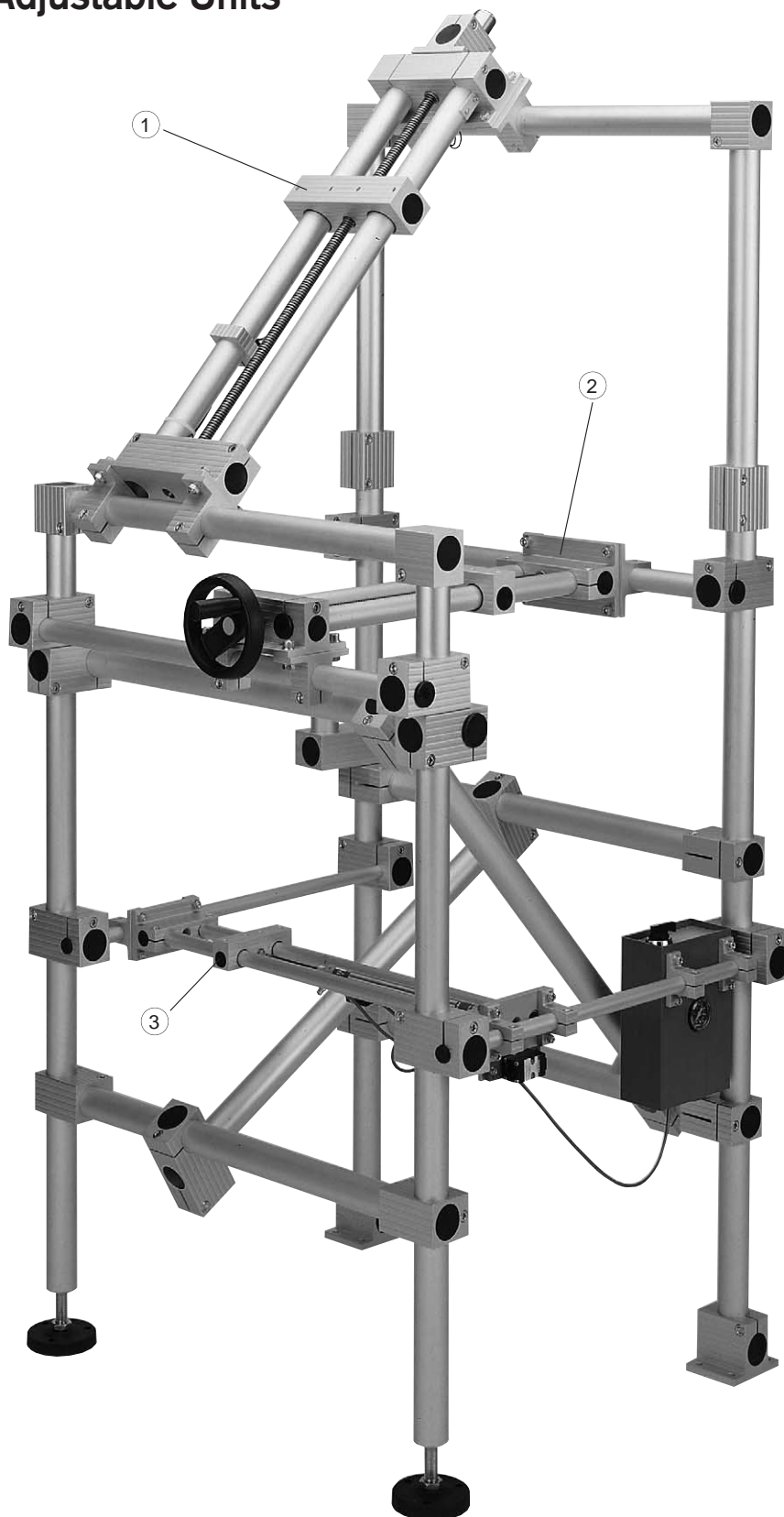
| Warehouse items | Stroke | Support A/B | Slide 1/2 | Spindle | Shaft end | Handwheel |
|-----------------|--------|--------------------|--------------------|------------------------|--------------|--------------------|
| VE20 | -1500 | R02-90 / -91 / -30 | R02-31-GL / -41-GL | M12 x 1.75 / TR 12 x 3 | as indicated | HR - Ø 80 / Ø 100 |
| VE30 | -2000 | R03-90 / -91 / -30 | R03-31-GL / -41-GL | M16 x 2.0 / TR 16 x 4 | as indicated | HR - Ø 125 |
| VE40 | -2500 | R04-90 / -91 / -30 | R04-31-GL / -41-GL | M20 x 2.5 / TR 20 x 4 | as indicated | HR - Ø 160 / Ø 200 |

See pages 26 – 29 for measurement information on the Supports and Slides

Other diameter and inclinations on request

KANYA supplies the Adjustable Units fully assembled.
Please enquire about additional items which we are able to supply.

Adjustable Units



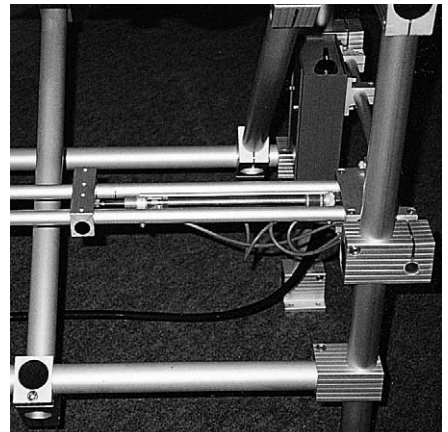
Use

Simple adjustment mechanisms with average precision and normal phase times. This adjustable unit is robust and reliable, and can be used wherever costs need to be kept down or wherever cost-effectiveness is the decisive factor.

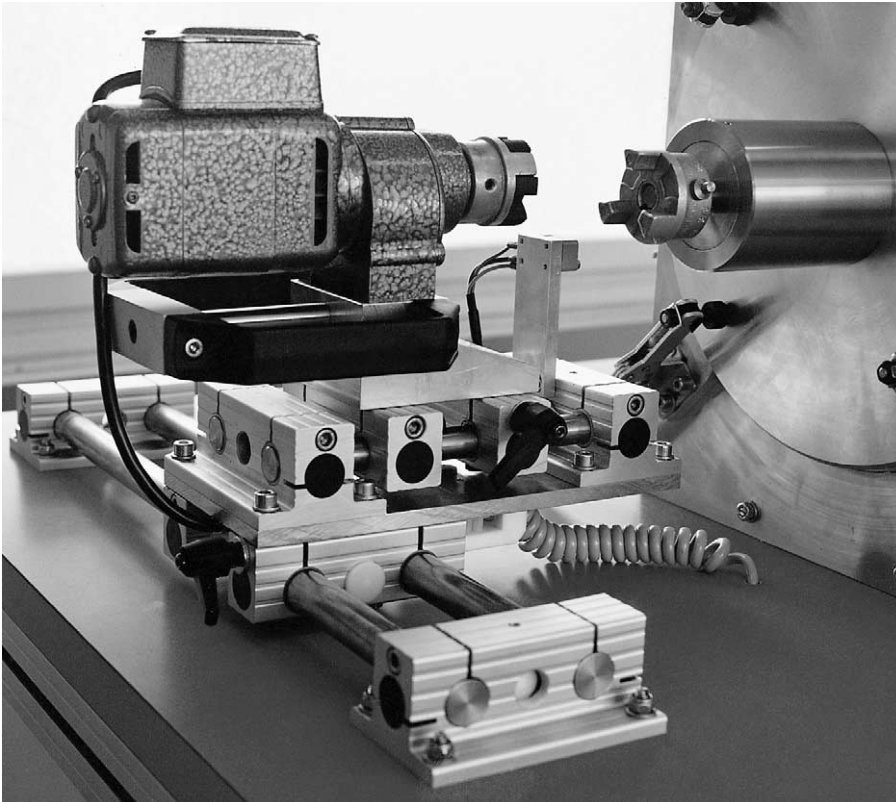
Mechanical engineering, automation, laboratories, photographic studios, table adjustments, etc.

Versions

- ① with metric threaded spindle
- ② with trapezoidal threaded spindle and handwheel
- ③ with pneumatic cylinder



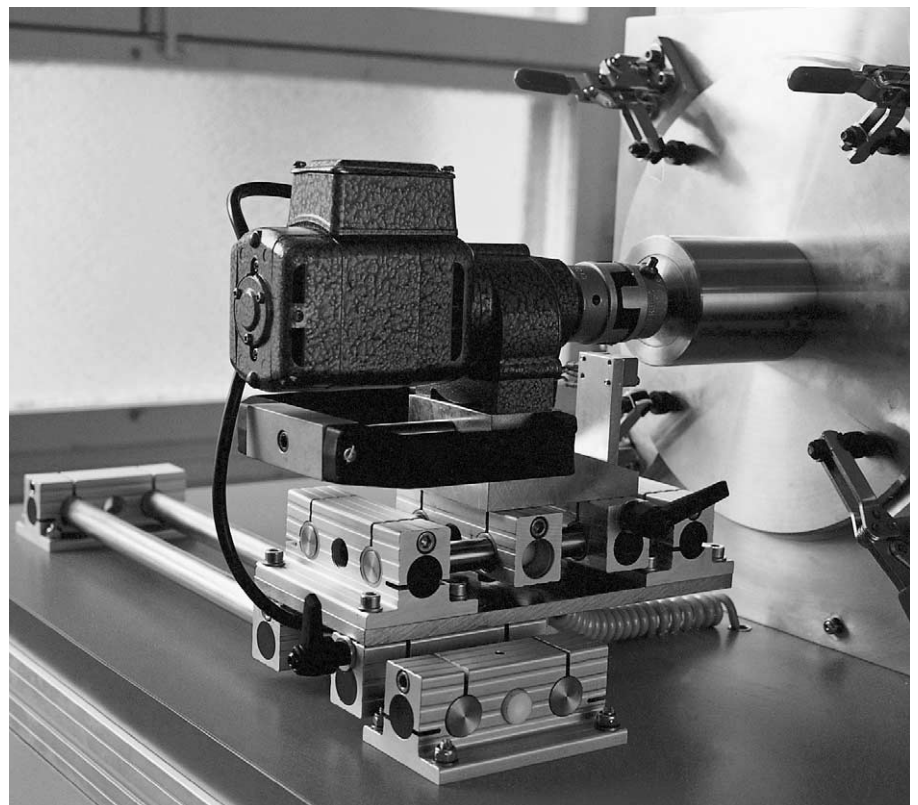
... or to your specifications.



Use

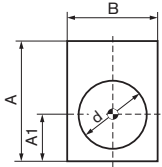
Couplable / decouplable drive on an X/Y adjustable unit for a micro-coating drum.

The electric motor is in the decoupled position.



The electric motor is in the coupled position.

Rectangular Extrusion

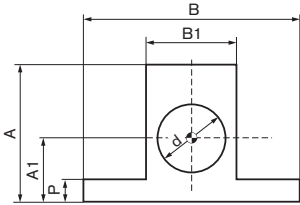


Can be supplied in warehouse length or cut to size.

Surface: untreated

| Nominal Diameter | Dimensions | | | d | Weight kg/m | Order Number L = 3000 mm | Order Number cut to ... mm |
|------------------|------------|----|----|------|-------------|--------------------------|----------------------------|
| | A | A1 | B | | | | |
| 12 | 24 | 8 | 16 | 11,3 | 0.76 | R01-95-00/3000 mm | R01-95-02/ ... mm |
| 20 | 36 | 13 | 30 | 19,2 | 2.10 | R02-95-00/3000 mm | R02-95-02/ ... mm |
| 30 | 52 | 20 | 40 | 29,2 | 3.70 | R03-95-00/3000 mm | R03-95-02/ ... mm |
| 40 | 62 | 25 | 50 | 39,2 | 4.96 | R04-95-00/3000 mm | R04-95-02/ ... mm |
| 50 | 72 | 30 | 60 | 49,3 | 6.34 | R05-95-00/3000 mm | R05-95-02/ ... mm |

Flange Extrusion

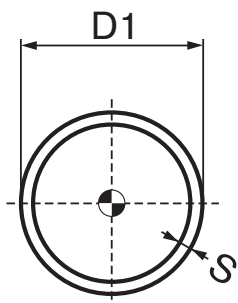


Can be supplied in warehouse length or cut to size.

Surface: untreated

| Nominal Diameter | Dimensions | | | d | P | Weight kg/m | Order Number L = 3000 mm | Order Number cut to ... mm | |
|------------------|------------|----|-----|----|------|-------------|--------------------------|----------------------------|-------------------|
| | A | A1 | B | | | | | | |
| 12 | 28 | 12 | 35 | 16 | 11,8 | 4 | 1.11 | R01-96-00/3000 mm | R01-96-02/ ... mm |
| 15 | 45 | 22 | 65 | 30 | 14.0 | 8 | 3.97 | R15-96-00/3000 mm | R15-96-02/ ... mm |
| 20 | 45 | 22 | 65 | 30 | 19.0 | 8 | 3.63 | R02-96-00/3000 mm | R02-96-02/ ... mm |
| 30 | 60 | 28 | 95 | 40 | 29.0 | 8 | 5.88 | R03-96-00/3000 mm | R03-96-02/ ... mm |
| 40 | 72 | 35 | 95 | 50 | 39.0 | 10 | 7.63 | R04-96-00/3000 mm | R04-96-02/ ... mm |
| 50 | 82 | 40 | 120 | 60 | 49.0 | 10 | 9.71 | R05-96-00/3000 mm | R05-96-02/ ... mm |

Aluminium Tubes



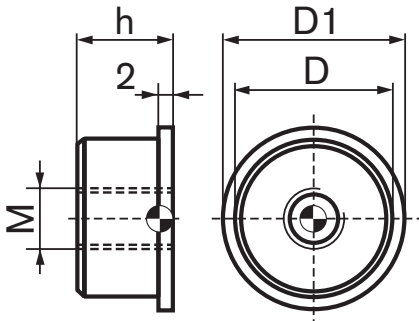
Can be supplied in warehouse length or cut to size.

Surface: untreated

| Nominal Diameter | Dimension D1 x S | Weight kg/m | Order Number L = 5000 mm | Order Number cut to ... mm |
|------------------|------------------|-------------|--------------------------|----------------------------|
| 12 | 12 x 1.5 | 0.130 | R01-97-00/5000 mm | R01-97-02/ ... mm |
| 20 | 20 x 2 | 0.310 | R02-97-00/5000 mm | R02-97-02/ ... mm |
| 30 | 30 x 2 | 0.480 | R03-97-00/5000 mm | R03-97-02/ ... mm |
| 40 | 40 x 2 | 0.650 | R04-97-00/5000 mm | R04-97-02/ ... mm |
| 50 | 50 x 3 | 1.210 | R05-97-00/5000 mm | R05-97-02/ ... mm |

For Diameter D tolerances, see page 10

Threaded Inserts

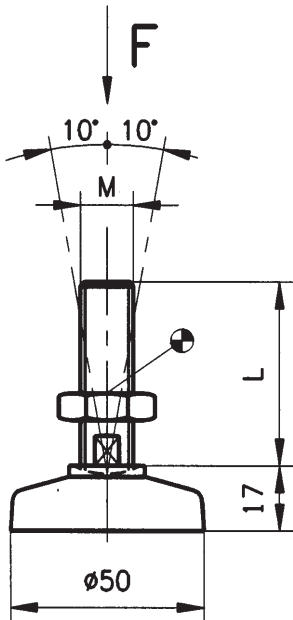


For aluminium tubes.

Material: aluminium.

| Nominal diameter | Dimensions | | h | M | Order Number |
|------------------|------------|----|----|-----|--------------|
| | D | D1 | | | |
| 20 | 16 | 20 | 15 | M10 | R14-20 |
| 30 | 26 | 30 | 15 | M10 | R14-30 |
| 40 | 36 | 40 | 20 | M16 | R14-40 |
| 50 | 44 | 50 | 20 | M16 | R14-50 |

Levelling Feet



Use

Continuous height adjustment and level compensation. KANYA levelling feet with diameter 50 are fitted with M10 or M16 threads of length 50 or 100 respectively. The setting screw is connected to the flange cup so as to allow play of $\pm 10^\circ$, which compensates for uneven floors.

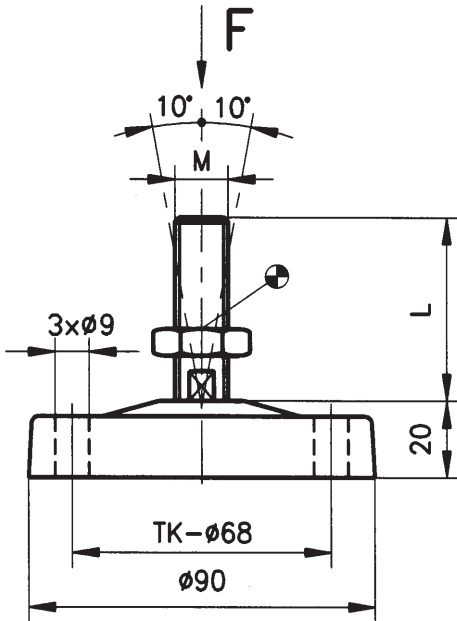
Construction

Flange cup: PA-GF, black
Screw: 8.8 galvanized steel



| Levelling Flange Diameter | Dimension Thread M x L | Load Capacity F | Order Number |
|---------------------------|------------------------|-----------------|--------------|
| 50 | 10 x 50 | 2500 N | B 42-50 |
| 50 | 10 x 100 | 2500 N | B 42-00 |
| 50 | 16 x 50 | 3500 N | B 44-50 |
| 50 | 16 x 100 | 3500 N | B 44-00 |

Levelling Feet



PA-GF



Alu

Use

Similar to the diameter 50 Levelling Feet. However, the load capacity is higher – particularly in the aluminium version.

Construction

Flange cup: Aluminium, diameter 90, same dimension as plastic version.
Screw: 8.8 galvanized steel

These flange cups can also be supplied without diameter 9 fixing holes.

PA-GF

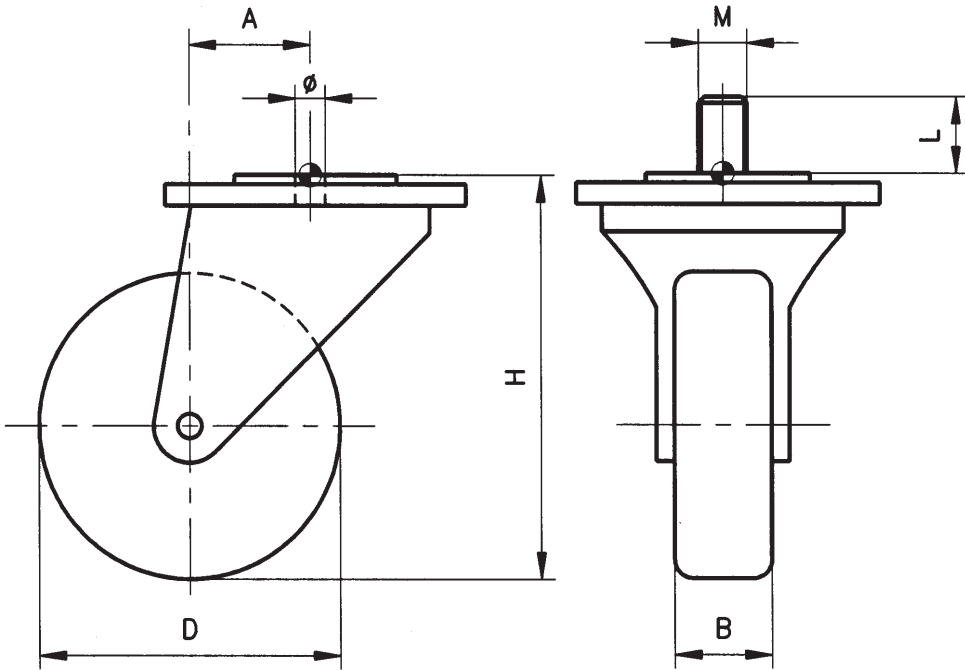
| Levelling Flange Dia. | Thread M x L | Loading Capacity F | Order Number |
|-----------------------|--------------|--------------------|--------------|
| 90 | 16 x 50 | 5000 N | B 45-50 |
| 90 | 16 x 100 | 5000 N | B 45-00 |

Aluminium

| Levelling Flange Dia. | Thread M x L | Loading Capacity F | Order Number with 3 x dia. 9 | Order Number without 3 x dia. 9 |
|-----------------------|--------------|--------------------|------------------------------|---------------------------------|
| 90 | 16 x 50 | 10000 N | B 45-51 | B 45-52 (-D)* |
| 90 | 16 x 100 | 10000 N | B 45-01 | B 45-02 (-D)* |

* These versions are also available with damping components: add -D to the order number.

Wheels



Use

Can be used universally, wherever mobility is required. A choice of two wheel diameters with or without brake is available, depending on the load requirement.

A 10.3 diameter through hole, or the M16 x 25 threaded stem make them simple to fit on to the tubes.

Construction:

Shackle: Galvanized steel, ball bearing

Wheel: Rubber running wheel, ball bearing

Strength: diameter 50 = 400 N

diameter 75 = 700 N

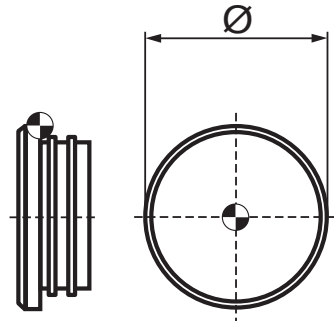
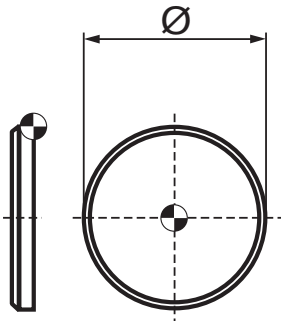
diameter 100 = 800 N

diameter 125 = 1000 N

| Wheel | Dimensions | | H | A | Thread dia. / M x L | Order Number without Brake | Order Number with Brake |
|-------|------------|----|-----|----|---------------------|----------------------------|-------------------------|
| | D | B | | | | | |
| Wheel | 50 | 18 | 70 | 25 | Ø 10,3 | B 48-50 | B 49-50 |
| Wheel | 75 | 25 | 97 | 30 | Ø 10,3 | B 48-75 | B 49-75 |
| Wheel | 100 | 32 | 132 | 42 | Ø 10,3 | B 48-100 | B 49-100 |
| Wheel | 100 | 32 | 132 | 42 | M 16 x 25 | A 48-100 | A 49-100 |
| Wheel | 125 | 32 | 158 | 42 | Ø 10,3 | B 48-125 | B 49-125 |
| Wheel | 125 | 32 | 158 | 42 | M 16 x 25 | A 48-125 | A 49-125 |

Other dimensions and conductive wheels can be supplied on request

Plastic Caps



for Tube Clamps



| Nominal Diameter | Order Number |
|------------------|--------------|
| 20 | R10-20 |
| 30 | R10-30 |
| 40 | R10-40 |
| 50 | R10-50 |

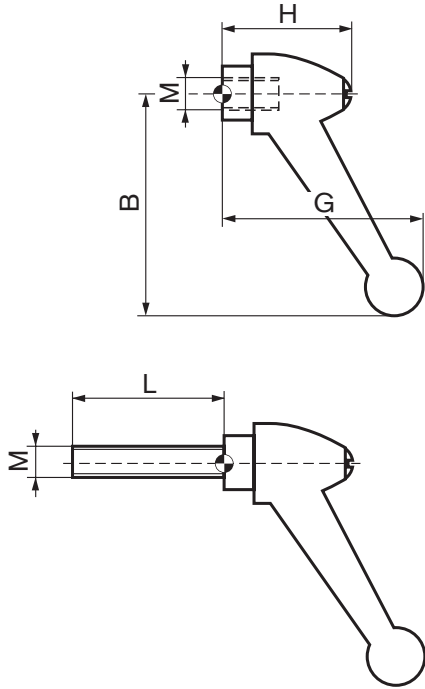
The tube clamp units are generally supplied with plastic caps.

For Aluminium Tubes



| Nominal Diameter | Order Number |
|------------------|--------------|
| 20 | R11-20 |
| 30 | R11-30 |
| 40 | R11-40 |
| 50 | R11-50 |

Clamp Lever

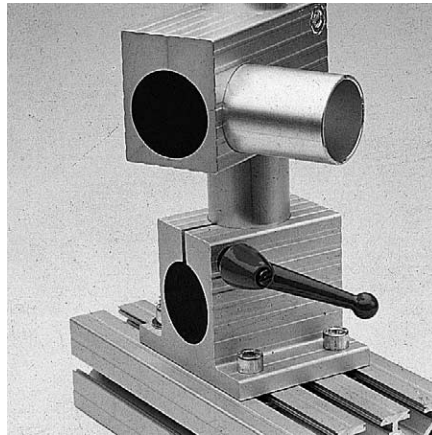


All tube clamp elements can also be supplied with clamp levers:

Add ...-K or ...-2K to the order number.

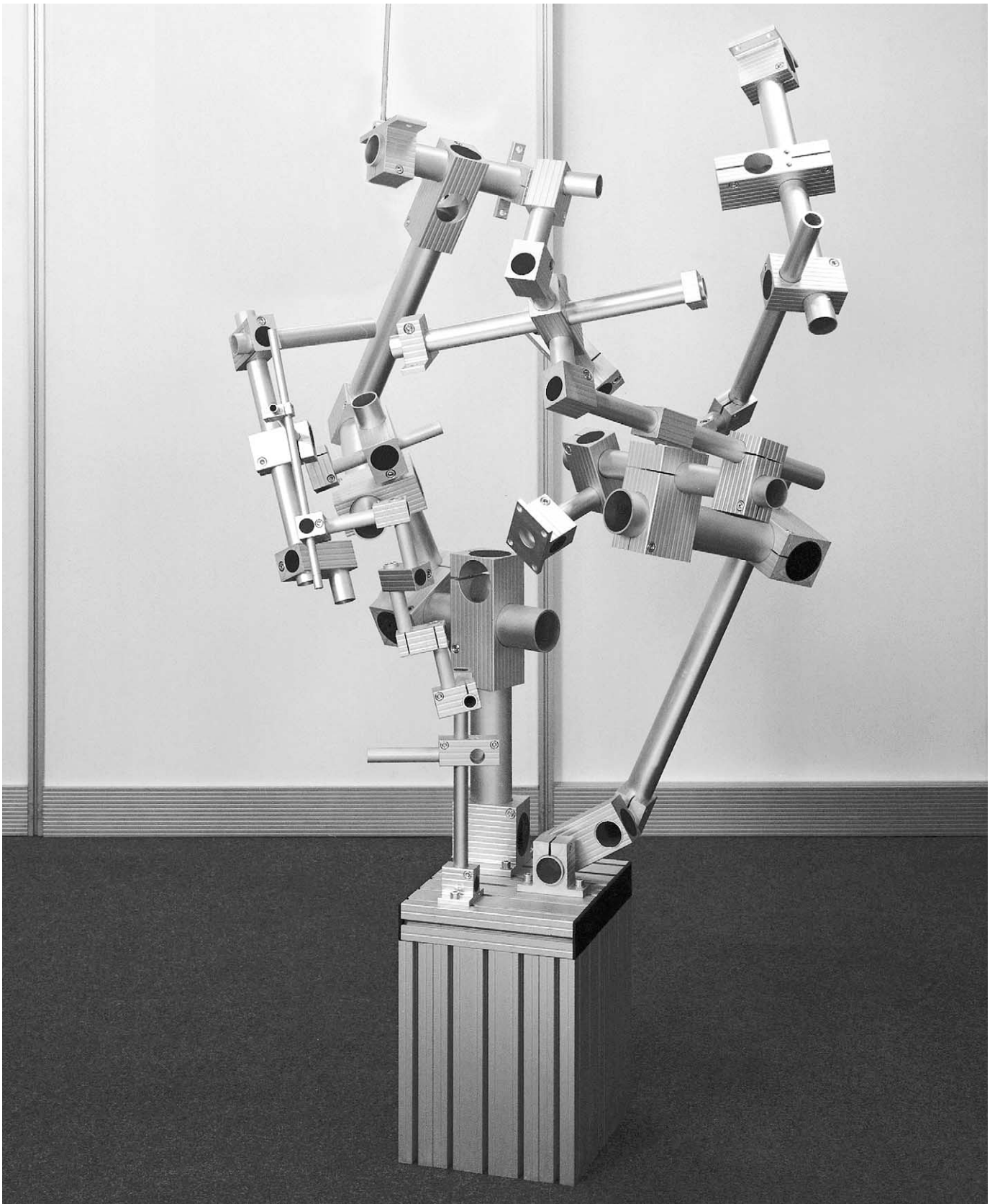
The clamp levers are adjustable and are made of zinc alloy. Steel body with thread.

Colour: grey



| Nominal Thread | Dimensions | | H | L | Order Number |
|----------------|------------|------|------|----|--------------|
| | B | G | | | |
| M6 | 58 | 52,5 | 31,5 | - | R65-60 |
| M8 | 58 | 52,5 | 31,5 | - | R65-80 |
| M8 | 58 | 52,5 | 31,5 | 40 | R65-84 |

Other versions can be supplied on request





A VENTOR SICHERHEITSSYSTEME – AUTOMATISIERUNG
 Falkenau 11
 A-4690 Schwanenstadt
 Tel: 0043 (0)7673 80511-0
 Fax: 0043 (0)7673 80511-40
 e-mail: office@ventor.at
 Internet: http://www.ventor.at

B MAM S.A.
 Industrie/Automation
 Rue de la Station 9–11
 B-1435 Mont St. Guibert
 Tel: 0032-10/657 012
 Fax: 0032-10/658 791
 e-mail: m.a.m.industrie@skynet.be

BR KANYA DO BRASIL LTDA.
 Av. das Araucárias, 509 – Barigüi
 CEP 83707-000
 Araucária-Paraná-Brasil
 Fone: 0055-41/643 1384
 Fax: 0055-41/643 3628
 e-mail: info@kanya.com.br
 Internet: http://www.kanya.com.br

D DRECKSHAGE GMBH & CO. KG
 Walter-Werning-Straße 7
 D-33699 Bielefeld
 Tel: 0049-521/92 59-0
 Fax: 0049-521/92 59 289
 e-mail: zentrale@dreckshage.de
 Internet: http://www.dreckshage.de

KANYA DEUTSCHLAND GMBH
 Meusselsdorferstraße 25
 D-95615 Marktredwitz
 Tel: 0049-9231/603 860
 Fax: 0049-9231/603 861
 e-mail: info@kanya-deutschland.de
 Internet: http://www.kanya-deutschland.de

DK JJ MEKANIK AS
 Industriparken 17
 DK-4450 Jyderup
 Tel: 0045-59/25 81 00
 Fax: 0045-59/25 81 01
 e-mail: info@jjmekanik.dk
 Internet: http://www.jjmekanik.dk

ESP IBALTEC SISTEMAS, S.L.
 C/. Josep Soler, 74-76 bjs.
 E - 08310 ARGENTONA (Barcelona)
 Tel: 0034-93/756 11 53
 Fax: 0034-93/797 40 34
 e-mail: info@ibaltec.com
 Internet: http://www.ibaltec.com

F CIEMA SA
 Rte de Beaumont/Menneval
 F-27305 Bernay Cedex
 Tel: 0033-232/47 35 20
 Fax: 0033-232/45 35 69

BERNAY AUTOMATION S.A.
 B.P. 451-1, Rue de Menneval
 F-27304 Bernay Cedex
 Tel: 0033-232/473 510
 Fax: 0033-232/430 188
 e-mail: info@bernay-automation.com
 Internet: http://www.bernay-automation.com

GB ALUSETT LTD.
 Units F & G, Wykeham Industrial Estate
 Moorside Road, Winchester
 Hampshire SO23 7RX, UK
 Tel: 0044-1962/842 424
 Fax: 0044-1962/842 425
 e-mail: sales@aluset.co.uk
 Internet: http://www.aluset.co.uk

I TECNO-CENTER S.R.L.
 C.so Lombardia, 41
 I-10078 Venaria Reale (TO)
 Tel: 0039-011/455 11 21
 Fax: 0039-011/455 75 95
 e-mail: info@tecno-center.it
 Internet: http://www.tecno-center.it

IL CONLOG LTD.
 7 Leshem St.
 P.O. Box 3571
 IL-Petach-Tikva 49134
 Tel: 00972-3/926 95 95
 Fax: 00972-3/923 33 67
 e-mail: conlog@conlog.co.il
 Internet: http://www.conlog.co.il

J MIWA CO. LTD.
 No. 632, SEKO 2-chome
 Moriyama-ku
 J-Nagoya 463 0068
 Tel: 0081-52/795 60 11
 Fax: 0081-52/795 33 66
 e-mail: postmiwa@miwa-inc.co.jp
 Internet: http://www.miwa-inc.co.jp

NL BT BLIJLEVEN TECHNIK
 Jan Schamhartstraat 22
 NL-8121 CP Olst
 Tel: 0031-570/631 980
 Fax: 0031-570/676 581
 e-mail: rblijleven@cs.com

PL TABAL Sp. J.
 ul. Energetyków 14
 PL-20-468 Lublin
 Tel: 0048-(0)81/7490911
 Fax: 0048-(0)81/7490128
 e-mail: kanya@tabal.pl
 Internet: http://www.tabal.pl

S EIE MASKIN AB
 Vassgatan 3
 S-41502 Göteborg
 Tel: 0046-31/707 48 00
 Fax: 0046-31/19 52 55
 e-mail: eie@eie.se
 Internet: http://www.eie.se

USA A-LINE CORPORATION
 2233-M Interstate North Drive
 USA-Charlotte N.C. 28206
 Tel: 001-704/596 09 91
 Fax: 001-704/596 23 02
 e-mail: aline97@cs.com

KANYA-Messebau-Partner weltweit
 Lüdemann & Co.
 Internationaler Messebau
 Segeberger Chaussee 175
 D-22851 Norderstedt
 Tel: 0049-40/524 3405
 Fax: 0049-40/524 3258

Headquaters • KANYA AG/SA/Ltd. • Neuhofstrasse 9 • CH-8630 Rüti

Tél. 0041-(0)55/251 58 58 • Fax 0041-(0)55/251 58 68 • e-mail: info@kanya.com • Internet http://www.kanya.com